

# HONG KONG ACADEMY OF MEDICINE



2010

ANNUAL REPORT

## **Objects of the Hong Kong Academy of Medicine**

In recognition of the need for essential postgraduate medical education and training in Hong Kong, the Hong Kong Academy of Medicine was formally established under the Hong Kong Academy of Medicine Ordinance (Cap 419).

Objectives of the Academy are:

to promote the advancement of the art and science of medicine; to foster the development of continuing medical education;  
to promote integrity, ethical conduct and standards in the practice of medicine and its specialties;  
to promote the improvement of health care for Hong Kong citizens; to foster a spirit of co-operation among medical practitioners;  
to facilitate the exchange of information and ideas in medicine and matters concerning the medical profession.

The Academy is an independent institution with statutory power to organise, monitor, assess and accredit all medical specialist training and to oversee the provision of continuing medical education.

### **香港醫學專科學院成立宗旨及憲章**

香港醫學專科學院根據「香港醫學專科學院條例」(Cap.419)正式成立，以滿足社會對大學以上程度醫學教育與培訓的需求。

香港醫學專科學院成立的宗旨是促進醫學技術的發展；鼓勵延續醫學教育；提高專業及執業操守與專科執業水準；促進改善香港市民健康護理；提升執業醫生間的合作精神；以及促進醫學資訊及意見交流。

香港醫學專科學院乃一所獨立的法定機構，有權組織、監察及評核所有醫學專科訓練，並頒授有關資格，同時亦負責提供延續醫學教育。

# CONTENTS 目錄

---

President's Report & Message 主席報告	2
Council & Committees' Reports 院務委員會及各委員會報告	4
Honorary Treasurer's Report 名譽司庫報告	26
Auditors' Report 核數師報告	27
HKAM Structure 香港醫學專科學院架構	57
HKAM Representation 香港醫學專科學院代表	62
Fellowship Statistics 院士數據	63
New Fellows 新院士名單	64

---

## *President's Report and Message*

---

The period of 2009-2010 was another successful year for our Academy. I am most grateful to all the members of our Council, and our Fellows and friends who have been serving the Academy and helping us to achieve our mission. With your unfailing support, the Academy is making steady progress in the promotion of the art and science of medicine through training, examinations, accreditation and continuing medical education. I have confidence that the Academy is moving in the right direction and standing on firm ground.

The first phase of our Mainland Specialist Training and Registration Project with the Chinese Ministry of Health ended early this year with the first official ceremony in Beijing awarding specialist status in Dental Surgery, Ophthalmology, Orthopaedic Surgery and Paediatrics. The first batch of registered specialists received their certificates at the ceremony. Although the number was small, it was an important first step. We are now looking forward to the commencement of the second phase which will involve other specialties.

After years of preparation, the first Tripartite Congress of the Academies of Hong Kong, Malaysia and Singapore will be held on November 12-14, 2010. We are proud to be the host of this First Congress. In the future, the Congress will be held every three years in rotation in Hong Kong, Malaysia and Singapore. I wish to thank Dr. Donald Li for chairing the Organizing Committee and spending great effort in ensuring success of the Congress. I am also grateful to Dr. Kathleen So for her meticulous organization of the social events, and indebted to Dr. C.B. Chow for bringing together a high quality scientific program.

In response to the request of the Medical Council of Hong Kong, the Academy has prepared a document entitled "Guidelines on Procedural Sedation". I wish to thank Dr. C.T. Hung and his working group for the effort. This is the first document of its kind published by the Academy. We are prepared to produce guidelines on other important medical practices according to needs.

The Think Tank of our Academy has successfully accomplished its first task of producing a research report on "Medical Services for the Elderly in Hong Kong" and has made a number of useful recommendations. The document was sent to the Hong Kong SAR Government and made available to our Fellows. A public message was also announced through the media. I wish to thank Professor John Leong and members of the Think Tank for their hard work.

Our Public Relations Committee was active in communicating with our community. With the enthusiastic support of the coordinators of our member Colleges, useful medical information was disseminated to the community through various public media. I wish to thank Dr. C.L. Law and the Public Relations Committee for their effort.

Suggested by the Medical Protection Society and supported by the Past Presidents Advisory Committee and the Academy Council, we have set up a local register of medical experts. This provides information for those who need medical specialists to provide expert opinions on some medico-legal cases. A few hundred Fellows have already participated. We shall monitor the utilization of the register to see if it serves the purpose.

It has been another remarkable year for me serving you as President of the Academy. I am looking forward to seeing our Academy growing from strength to strength.

**Raymond Liang**

President  
(September 2010)



# 主席報告



二零零九 - 一零年度對學院來說是成功的一年，作為學院主席，我衷心感謝院務委員會全體成員、所有院士及各方朋友的幫助，一齊為學院創建更好的將來。有了您的支持，透過培訓、考試、審核專科資格和持續醫療教育，學院逐步推廣醫療的藝術和科學。我有信心，學院根基穩固，而且正朝著正確的目標邁進。

學院與國家衛生部的第一階段專科醫師培訓及准入制度計劃已經結束，年初在北京舉行了儀式，正式頒授首批專科資格予牙科、眼科、骨科和兒科的專科醫師。雖然首批獲頒證書的專科醫師人數不多，但已經踏出了最重要的一步。期望下一個階段的開展，可以有更多的專科參與。

經過經年籌備，首個由香港、馬來西亞和新加坡的醫學專科學院舉辦的第一屆三方會議將於二零一零年十一月十三及十四日舉行。學院很榮幸首屆會議在香港舉行。將來，會議將每三年輪流在香港、馬來西亞及新加坡舉行。在此，我要特別感謝李國棟醫生出任會議籌備委員會的主席，投入很多時間和精神，確保會議順利舉行。我也要感謝蘇碧嫻醫生為會議安排了精彩的社交活動，更要感謝周鎮邦醫生籌劃水準極高的科學會議活動。

按醫務委員會要求，學院準備了「鎮靜程序指引」，特別感謝熊志添醫生及工作小組成員。這是學院首次出版的相類似文件。我們準備好以後有需要，也會再發表其他重要的醫療執業指引。

學院的智囊小組已完成了首個研究，進行了一個有關於香港年老長者對醫療需求的調查，小組把得到的數據和資料整理好，作了一份報告，並提出了一些有用的建議。相關報告已經交予香港特別行政區，院士也可以看到報告內容。小組也召開記者會，向公眾公佈調查結果。感謝智囊小組主席梁智仁教授及其他成員的努力工作。

學院的公共關係委員會積極增加與社會大眾的溝通，分科學院的代表也樂意支持，委員會得於透過不同的媒體，向公眾傳播有用的醫療資訊。我要感謝羅至廉醫生及其他成員的努力。

Medical Protection Society 建議，並得到前任主席顧問委員會及院務委員會支持，學院成立了一個本地醫療專家的名單。將來如果有機構需要就一些和醫療有關的法律問題諮詢醫學專家意見，這個專家名單便能提供協助。現在已經有幾百個院士參與，我們將密切留意，看這個名單是否能夠發揮本身的作用。

過去的一年擔任學院主席，是特別有意義的一年，期望學院繼續茁壯成長！

**梁憲孫**  
主席

(二零一零年 九月)

# Council and Committees' Reports

## Council

4

A total of 8 meetings were held between September 2009 and August 2010. Besides dealing with regular matters like admitting new Fellows, reviewing guidelines and policies, endorsing Colleges' training documents, certifying Fellows and non-Fellows for specialist registration, and vetting applications for temporary medical registration, Council also deliberated on special issues such as exploring the possibility of alternative medical professional liability schemes for Fellows, impact of doctor work reform, etc.

With Council's consent, the Academy offered input or assisted the Government and other medical bodies on various areas, for example, nominating specialists as examiners for the Macau Health Bureau's consultant examinations, developing a set of guidelines on procedural sedation as requested by the Medical Council of Hong Kong, collaborating with the Department of Health in treatment of tobacco dependence, as well as compiling a list of medical expert witnesses which would be made available to the Police, various Government departments, Medical Council, Dental Council, and legal firms upon request.

As directed by the Academy Council, the Think Tank led by Prof. John Leong conducted a study on the requirements of medical services of elderly citizens in Hong Kong. After over a year of research, the findings were summarized in a report and announced through the media at a press conference held on 7 March 2010. Besides the press conference, the Academy has also organized a series of medico-legal seminars for all Fellows to participate as continuous professional development. Local and international experts in the medico-legal arena have been invited to speak on topics such as medical errors, ethics and communication.



The Academy signed a Memorandum of Understanding with the Ministry of Health (MOH) in April 2006 to facilitate the development of a specialist registration system in Mainland China. Pilot scheme started in April 2008. In March 2009, MOH released a Work Plan for the Pilot Scheme and started the accreditation with assistance from the Academy and 4 Colleges, namely Dental Surgeons, Ophthalmologists, Orthopaedic Surgeons and Paediatricians. On 25 June 2010, an inauguration ceremony of certification of "Grandfathers" for the 4 specialties was conducted in Beijing. Around 70 renowned doctors from these 4 specialties were conferred the title of "Specialists" by the MOH. The Academy and the 4 Colleges involved in the pilot scheme were invited to attend.





# 院務委員會及各委員會報告

## 院務委員會

院務委員會於二零零九年九月至二零一零年八月，共舉行了八次會議，處理學院日常工作：收納新院士、檢討指引及政策、通過分科學院之培訓文件、審核院士或非院士申請專科註冊的資格及通過臨時醫學註冊的申請。院務委員會同時也商議了一些特別的議題，例如為院士探討另外一個專業賠償方案的可行性，檢討醫生工作改革的影響等等。在院務委員會同意下，學院協助政府或其他醫療機構在不同的議題上提供意見，例如提名專科醫生為澳門衛生局的顧問考試擔任考官、在香港醫務委員會要求下，制定了一套鎮靜程序的指引，與衛生署合作治療煙癮，同時準備了一套醫療專業人員的名單，有需要時可以擔任警方、政府部門、醫務委員會、牙醫管理委員會和律師樓的醫療專家證人。

由梁智仁教授領導的智囊小組在院務委員會指引下，進行了一個有關於香港長者對醫療需求的調查。經過一年的研究，小組把得到的數據和資料整理好，作了一份報告，並於二零一零年三月七日舉行新聞發佈會，公佈調查結果。



此外，學院也為院士舉行了一系列醫學有關的法律研討會，作為持續專業發展的一部分。本地和海外的專家獲邀出席，就醫療失誤、專業操守和溝通技巧等各方面發表意見。

二零零六年學院與國家衛生部簽署合作備忘錄，協助推動在內地推行專科醫師准入制度，試點計劃正式於二零零八年四月開展。二零零九年三月，衛生部在四個分科學院，牙科、眼科、骨科及兒科協助下，公佈了工作計劃。二零一零年六月二十五日，衛生部在北京召開了四個專科的老專家頒授儀式，大約七十名來自四個專科的資深醫生獲得衛生部正式授予「專科醫師」銜頭。學院及四個分科學院的代表獲邀出席。



## 16<sup>th</sup> Annual General Meeting (AGM)

The 16th AGM was held on 18 December 2009 at the Lim Por Yen Lecture Theatre. During the meeting, the report of the Council, the Honorary Treasurer's report, the audited accounts, the appointment of the auditors, and the admission of new Fellows were endorsed. Finally, the following results of the election of 5 Council Members were announced. Dr. CHOW Chun Bong, Prof. Cindy LAM Lo Kuen, Dr. LAW Chi Lim, Prof. William WEI, and Dr. WONG Chun Por were re-elected for another term of 2 years.

## 16<sup>th</sup> Annual Fellowship Conferment Ceremony



The Academy's AGM, Fellowship Conferment Ceremony and David Todd Oration were also held on 18 December 2009. Joining the Academy Council to officiate the ceremony were Prof. Ron Zimmern (2009 David Todd Orator, Executive Director of Cambridge's Foundation for Genomics and Population Health), Dr. the Hon. York Chow (Secretary for Food and Health), Mr. Anthony Wu (Chairman, Hospital Authority), Mr. Shane Solomon (Chief Executive, Hospital Authority), Prof. Felice Lieh-Mak (Chairman, Medical Council of Hong Kong), Dr. Homer Tso (Chairman, Dental Council of Hong Kong), Prof. Fok Tai-fai (Dean, Faculty of Medicine, CUHK), Prof. S.P. Lee (Dean, Li Ka Shing Faculty of Medicine, HKU), Prof. Sir David Todd (Founding President, HKAM Honorary Fellow), Dr. David Fang (Past President, HKAM Honorary Fellow), Dr. the Hon. Leong Che-hung (Past President, HKAM Honorary Fellow), Prof. Grace Tang (Immediate Past President, HKAM Honorary Fellow), and Dr. Peter C.Y. Lee (HKAM Honorary Fellow).

The ceremony began with the conferment of an Honorary Fellowship to Prof. Grace Tang in recognition of her achievements in the medical profession, as well as her contributions to the Academy, to Hong Kong, and Mainland China. Following that, a total of 271 new Fellows were conferred Academy Fellowship by the President in person or in absentia.





## 第十六屆週年大會

第十六屆週年大會已順利於二零零九年十二月十八日假林伯欣演講廳舉行。會上通過了院務委員會報告、名譽司庫報告、核數賬目及核數師的任命。學院收納了新院士及公佈了五位院務委員會委員的選舉結果，他們分別為周鎮邦醫生、林露娟教授、羅致廉醫生、韋霖教授及王春波醫生，獲重新委任，任期兩年。

## 第十六屆年度院士頒授儀式



院士頒授儀式及達安輝講座與週年大會同日、假邵逸夫堂舉行。出席嘉賓包括 Prof. Ron Zimmern (2009達安輝講座主講嘉賓、Cambridge's Foundation for Genomics and Population Health 行政總裁)、周一嶽醫生(食物及衛生局局長)、胡定旭先生(醫院管理局主席)、蘇利民先生(醫院管理局行政總裁)、麥列菲菲教授(香港醫務委員會主席)、左國偉醫生(香港牙醫管理委員會主席)、霍泰輝教授(香港中文大學醫學院院長)、李心平教授(香港大學醫學院院長)、達安輝教授(創院主席、香港醫學專科學院榮譽院士)、方津生醫生(前任主席、香港醫學專科學院榮譽院士)、梁智鴻醫生(前任主席、香港醫學專科學院榮譽院士)、鄧惠瓊教授(上任主席、香港醫學專科學院榮譽院士)及李仲賢醫生(香港醫學專科學院榮譽院士)。

當日由頒授榮譽院士資格予鄧惠瓊教授揭開序幕，以表揚鄧教授的專業成就，同時更表揚鄧教授對醫學界及對學院、香港、和中國內地的貢獻。其後，學院收納了二百七十一名新院士，大多親自出席，從主席手中接過院士文憑。



The Best Original Research by Trainees (BORT) recognizes excellence in research done by doctors while in specialist training. The finalists were invited to present their work to the Panel of Judges, consisting of Prof. Tony Chung (Panel Chairman), Dr. Kam Chak Wah; Prof. Raymond Liang; Prof. Leung Ting Hung; Prof. Lo Chung Mau and Dr. C.T. Hung. The Gold Medal of the 2009 BORT contest went to Dr. Chui Lap Bun from the College of Surgeons. The Silver Medal went to Dr. Joey Leung Shuk Yan from the College of Psychiatrists. Dr. Vera Chung Yeung from the College of Surgeons received the Bronze Medal. The medals were presented to the 3 winners by Dr. C.T. Hung, the Vice-President (Education and Examinations).



The Best Original Paper Award (BOPA), presented by the Editorial Board of the Hong Kong Medical Journal, is to encourage original writings of good quality by doctors. The 2009 BOPA went to Dr. W.T. Poon et al, for their paper entitled 'Outbreak of hypoglycaemia: sexual enhancement products containing oral hypoglycaemic agent' (Hong Kong Med J 2009; 15:196-200). Dr. Poon received the medal from the Editor, Dr. Richard Kay.

Plaques of Appreciation were presented to several former Council Members for their services and contributions: Dr. W.K. Ngai (Immediate Past President of the College of Orthopaedic Surgeons), Dr. W.F. Ng (Immediate Past President of the College of Pathologists), Dr. K.B. Fung (Immediate Past President of the College of Otorhinolaryngologists), and Prof. Louis Low (Immediate Past President of the College of Paediatricians).



Dr. W.F. Ng



Dr. K.B. Fung

## 2009 David Todd Oration



The David Todd Oration, established as the most prestigious lecture of the Academy to honour the Academy's Founding President, was held in conjunction with the Annual Fellowship Conferment Ceremony. The Academy was honoured to have Prof. Ron Zimmern, Executive Director of the Foundation for Genomics and Population Health, to speak on the topic "Genomics, Personalised Medicine and the Role of Public Health in the 21st Century".

## Annual Dinner

The evening ended with the annual dinner, held at the Exhibition Hall of the Academy's building. The annual dinner was attended by over 200 Fellows and guests.



設立最佳學員原創研究獎的目的在於表揚學員接受專科培訓時於研究方面的傑出成績。進入最後階段的學員獲邀請在評判團前解釋自己的研究工作成果。評判團有鍾國衡教授(主評判)、甘澤華醫生、梁憲孫教授、梁挺雄教授、盧寵茂教授及熊志添醫生組成。二零零九年的金獎得主為外科醫學院的徐立斌醫生、銀獎為精神科醫學院的梁淑恩醫生、銅獎得主為外科醫學院的鍾楊醫生。頒獎儀式由副主席(教育及考試事務)熊志添醫生主持。

最佳原創論文獎是由《香港醫學雜誌》編輯委員會設立，鼓勵醫生撰寫優秀的論文。二零零九年最佳原創論文獎的得主是潘永達醫生，論文為 Outbreak of hypoglycaemia: sexual enhancement products containing oral hypoglycaemic agent。潘永達醫生從編輯祈理治醫生手中領取獎牌。



當日亦頒授紀念牌予多名前院務委員會委員，表揚他們對學院的貢獻，包括倪偉傑醫生(香港骨科醫學院上任院長)，吳榮豐醫生(香港病理學專科學院上任院長)、馮啟賓醫生(香港耳鼻喉科醫學院上任院長)及盧忠啟教授(香港兒科醫學院上任院長)。

盧忠啟教授

## 建安輝講座2009

建安輝講座是學院為了向創院主席建安輝教授致敬而舉行的最具代表意義的演講，緊接院士頒授儀式後舉行。學院很榮幸邀請了 Cambridge's Foundation for Genomics and Population Health 的行政總裁 Prof. Ron Zimmern 擔任建安輝講座2009的主講嘉賓，演講題目為 Genomics, Personalised Medicine and the Role of Public Health in the 21<sup>st</sup> Century。

## 週年晚宴

當晚於展覽廳舉行盛大的週年晚宴，共有超過兩百名院士及賓客出席。



Conference Committee took the responsibility in organizing the 1<sup>st</sup> Tripartite Congress, entitled “**Benefits and Risks of Recent Medical Advances**” scheduled to be held on 13-14 November 2010. This is the first collaborating conference between Hong Kong Academy of Medicine, Academy of Medicine of Malaysia and Academy of Medicine, Singapore.

The Opening of the 1<sup>st</sup> Tripartite Congress will be officiated by The Honourable Henry Tang, Chief Secretary for Administration of the HKSAR on 12 November 2010. Dr Kin-hung Lee, Honorary Professor, Faculty of Medicine, University of Hong Kong and Prof Eng-kiong Yeoh, Professor of Public Health and Head of Health System, Policy and Management at the School of Public Health and Primary Care of the Chinese University of Hong Kong will deliver the Halnan Lecture and Tun Dr Ismail Oration respectively. The twelve scientific sessions of the Congress, will be followed on 13 and 14 November 2010. Sessions include:

- |   |   |
|---|---|
| 1. Advances in Oncology                   | 7. Advances in Fetal Medicine                   |
| 2. Advances in Transplantation            | 8. Advances in Preventive Medicine              |
| 3. Advances in DM                         | 9. Advances in Vascular / Endo-Vascular Surgery |
| 4. Advances in Emerging Infection         | 10. Challenges in Substance Abuse               |
| 5. Advances in Resuscitation              | 11. Advances in Minimally Invasive Surgeries    |
| 6. Advances in Spine Care (Low Back Pain) | 12. Advances in Mental Health                   |

Besides the aforementioned, the Conference Committee continues to provide full secretariat support for medical organizations and government departments in organizing conferences and events. They include:

**AsiaLymph Protocol Development Meeting**

Organized by The U. S. National Cancer Institute on 12-15 January 2010 at the Hong Kong Academy of Medicine Jockey Club Building. 86 delegates were invited to attend the meeting.

**First WHO Meeting on the International Classification of Traditional Medicine**

Organized by World Health Organization on 25-29 May 2010 at the Mira Hotel. 61 participants from various countries attended the 5-day meeting.

**International Conference on “Healthcare Reforms in Comparative Health Systems”**

Organized by The Royal Australasian College of Medical Administrators and Hong Kong College of Community Medicine on 4-6 September 2010 at the Hong Kong Academy of Medicine Jockey Club Building. Over 300 delegates, including more than 100 participants from Australia, New Zealand and other overseas countries, joined the Conference. 46 overseas participants also joined the post conference hospital visit on 7 September 2010 to Peking University Shenzhen Hospital, Shenzhen.

**Scientific Symposium on Emergency Medicine – ABC for Resuscitology: Advances, Beliefs and Consensus**

Organized by Hong Kong College of Emergency Medicine, Hong Kong Society for Emergency Medicine and Surgery and Hong Kong Emergency Nurses Association on 17-18 September 2010 at the Hong Kong Academy of Medicine Jockey Club Building. It is estimated there will be 250 participants.



學術會議籌劃委員會負責籌備第一屆三邊會議，主題定為“**Benefits and Risks of Recent Medical Advances**”，將於二零一零年十一月十三及十四日舉行。這是學院與馬來西亞及新加坡醫學專科學院首次合作舉行的會議。

香港特別行政區政務司司長唐英年太平紳士將出席二零一零年十一月十二日的開幕典禮。香港大學醫學院名譽教授李健鴻醫生及香港中文大學的公共衛生及基層醫療學院的政策及管理的楊永強教授將分別擔任 Halnan Lecture 及 Tun Dr Ismail Oration 的主講嘉賓。十二個科學會議部份將於二零一零年十一月十三及十四日舉行，分別如下：

- |                  |                 |
|------------------|-----------------|
| 1) 腫瘤學研究進展       | 7) 胎兒醫學研究進展     |
| 2) 移植研究進展        | 8) 預防醫學研究進展     |
| 3) 糖尿病研究進展       | 9) 血管/內血管外科研究進展 |
| 4) 新感染研究進展       | 10) 藥物濫用問題的挑戰   |
| 5) 復蘇研究進展        | 11) 微創手術研究進展    |
| 6) 脊柱護理(腰背痛)研究進展 | 12) 心理健康研究進展    |

除了上述提及的三邊會議活動，學術會議籌劃委員會繼續協助醫療機構及政府部門籌辦會議及其他活動，提供完全或部份支援服務，這些活動包括：

### 亞洲淋巴瘤研究計劃操作規程大綱草案會議討論

由 U. S. National Cancer Institute 主辦，於二零一零年一月十二至十五日假香港醫學專科學院賽馬會大樓舉行，共有八十六名代表參加。

### 世界衛生組織首屆傳統醫藥國際分類計劃會議

由世界衛生組織於二零一零年五月二十五至二十九日假 Mira Hotel 舉行，一連五天的會議共有六十一名來自世界各地的參加者。

### 澳洲皇家醫務行政學院 - 香港社會醫學學院聯合國際會議 2010

#### 醫療衛生系統改革的比較

由澳洲皇家醫務行政學院及香港社會醫學學院於二零一零年九月四至六日假香港醫學專科學院賽馬會大樓舉行，超過三百名，包括一百名來自澳洲、紐西蘭及其他地區的代表參加。四十六名海外代表更參加了會後的醫院參觀活動，他們於二零一零年九月七日參觀了深圳的北京大學深圳醫院。

### 急診醫學學術研討會 - 復蘇學 ABC：信念、新知與共識

由香港急症醫學院、香港急症醫學會及香港急症科護士學會聯合主辦，將於二零一零年九月十七至十八日假香港醫學專科學院賽馬會大樓舉行，預計將有二百五十名參加者。

### **Brain, Behaviour and Mind 2010**

#### **Advancing Psychiatric Care in the East: Moving On – From Science to Service**

Jointly organized by the Hong Kong College of Psychiatrists and the Royal College of Psychiatrists scheduled on 11-13 December 2010 at the Hong Kong Academy of Medicine Jockey Club Building. It is estimated there will be 300 participants.

### **Hong Kong International Acupuncture Conference: Neurological and Mental Illness**

Organized by Hong Kong Association for Integration of Chinese-Western Medicine and Hospital Authority, Hong Kong on 14-16 January 2011 at the Hong Kong Academy of Medicine Jockey Club Building. It is estimated there will be 800 participants.

Besides overseeing the organization of medical-related conferences, the Conference Department continues to organize the Academy's Annual Golf Tournament. The 2009 HKAM/Medical Alumni Golf Tournament was held on 2 December 2009 at Xili Golf Club, Shenzhen. 53 Fellows and alumni members from the two Universities participated. Mr Shane Solomon, Chief Executive of the Hospital Authority, also joined in the tournament. The Champion of HKAM Golf Tournament was Dr Tai Yuk-king and the best gross winner was Dr William Ho.

## Education Committee

### **Continuing Medical Education / Continuous Professional Development**

#### *CME/CPD for Fellows*

The Academy implemented its mandatory CME for Fellows since 1996. The 5th cycle started on 1 January 2008. From this cycle onwards, the total CME points obtained through attending lectures or talks would be capped (at 75 for 2008-10 cycle) thereby encouraging active learning elements. According to records in the iCMECPD system, about 94% of Fellows have obtained at least 30 points, and 53% have obtained 90 points or more, after the second year of the cycle.

The current cycle will end on 31 December 2010. A revised set of CMECPD Guidelines will be effective from the next cycle (2011-13) onwards. Under the revised guidelines, Fellows are strongly advised to maintain a balanced CMECPD profile with a mix of different activities, including 5 points in a cycle from activities in the category "Quality Assurance, Audits and Activities for Improvement of Patient/Medical Care" in order to capture the full benefit of different types of CMECPD activities.

#### *General CPD Subcommittee*

The General CPD Subcommittee was formed to plan and organize general CPD activities for Fellows, trainees and other healthcare professionals. Activities would be organized in three main areas, namely (a) communication; (b) ethics and (c) doctor's health and wellbeing. Discussion has also been made with the Cognitive Institute, a subsidiary of Medical Protection Society (MPS), to explore feasibility to collaborate on running communication courses for trainees and Fellows. The Subcommittee suggested that the Academy consider developing its curriculum on communications and ethics.

## 心腦行為2010 - 東方精神科醫學知識與實踐之邁進

### 第二屆香港精神科醫學院暨英國皇家精神科學會聯合國際會議

由香港精神科醫學院及英國精神科學院聯合主辦，將於二零一零年十二月十一至十三日假香港醫學專科學院賽馬會大樓舉行，預計將有三百名參加者。

### 香港國際針灸學術會議 2011

由香港中西醫結合醫學會及醫院管理局主辦，將於二零一一年一月十四至十六日假香港醫學專科學院賽馬會大樓舉行，預計將有八百名參加者。

除了籌辦醫療性質的會議活動外，會議事務部繼續籌辦學院年度高爾夫球賽。「二零零九年度香港醫學專科學院與香港兩大學醫學院校友會高爾夫球友誼賽」已經於二零零九年十二月二日假深圳西麗高爾夫球場舉行。五十三名院士及兩所大學的校友出席比賽，醫院管理局行政總裁蘇利民先生也有出席。「二零零九年度香港醫學專科學院主席盃」由戴玉平醫生奪得，而何兆偉醫生就是總桿冠軍得主。

## 教育委員會

### 延續醫學教育 / 持續專業發展

#### 院士之延續醫學教育 / 持續專業發展

學院由一九九六年開始推行強制性延續醫學教育課程，第五個循環已經於二零零八年一月一日開始，從這個循環開始，出席演講、研討會的總延續醫學教育學分，將有上限。(二零零八至二零一零年的循環，上限為七十五分)希望鼓勵院士多參與主動的學習模式。根據 iCMECPD 系統的紀錄，循環的第二年，大約百分之九十四的院士獲取最少三十個學分，百分之五十三的院士獲取了九十分以上。

這個循環將於二零一零年十二月三十一日結束，新修訂的延續醫學教育 / 持續專業發展指引將由下個循環開始生效(二零一一年到二零一三年)。在新指引下，我們鼓勵院士保持一個平衡的延續醫學教育 / 持續專業發展情況，鼓勵他們參與不同類型的活動，包括每個循環內在「Quality Assurance, Audits and Activities for Improvement of Patient/Medical Care」這個範疇內最少有五個學分，希望院士可以藉此從不同的延續醫學教育 / 持續專業發展活動中獲益。

#### 普通持續專業發展委員會

成立普通持續專業發展委員會的目的是為院士、學員及其他醫護人員籌劃普通持續專業發展活動。籌劃活動將分為三大範疇，包括1)溝通技巧；2)專業操守及3)醫生的健康及福利。委員會已經和 Medical Protection Society (MPS) 旗下的附屬公司 Cognitive Institute 開始進行商討，探討一齊開辦為學員和院士而設立的溝通技巧課程的可行性。委員會建議學院考慮開辦以溝通技巧和職業操守為主的課程。

### *CME Subcommittee*

Under the Education Committee, a CME Subcommittee was established to take care of matters relating to the CME programme launched by the Medical Council of Hong Kong (MCHK), which is formally known as “CME Programme for Practising Doctors who are not taking CME Programme for Specialists” (MCHK CME Programme). This Subcommittee vets and awards CME points for activities organized by CME providers. It also plans and offers, with support from Academy Colleges, yearly dedicated CME activities for registrants of the Academy and other CME administrators of the MCHK CME Programme. The Subcommittee is currently chaired by Dr. Gene Tsoi.

The Subcommittee proposed and the Education Committee endorsed in February 2010 some policy changes for the MCHK CME Programme that registrants will be required to pay a one-off fee per cycle instead of an annual fee; and registrants will not be allowed to re-register with the Academy within the same cycle, after they have switched to other Administrators. But they can come back for the immediate next cycle.

### *MCHK CME Programme*

This Programme was introduced by MCHK in 2001 for doctors who are not taking CME programme for specialists. The Academy was appointed Programme Administrator, Accreditor and Provider for this programme. As an accreditor, the Academy has set up a robust system and coordinates with the other accreditors. The CME subcommittee formed under the Education Committee takes care of this MCHK CME programme. As at 1 August 2010, there were 971 doctors registered with the Academy, either directly or via the Colleges, for the MCHK CME programme. The Academy has provided over 2,400 hours of CME including those CME activities organized by Colleges and opened up for non-Fellows from August 2009 to July 2010.

<b>Category</b>	<b>Event Count</b>	<b>CME Hours</b>
Conference/Lecture/Meeting/Seminar/Symposium	99	173
Course	121	390
Discussion	80	96
Meeting	787	1466
Presentation	137	194
Self-study	10	16
Video-viewing	15	22
Workshop	32	96
<b>TOTAL:</b>	<b>1,281</b>	<b>2,453</b>

From August 2009 to July 2010, there are 795 attendees for the dedicated lectures. The Academy also conducted surveys among participants of the CME activities organized by the Academy dedicated for this group of doctors. 344 completed questionnaires were received. Around 326 doctors who participated in the surveys (94.77% of total respondents) rated these activities “good” or “excellent”.

### **Clinical Guidelines**

The Education Committee has formed a Working Group to establish guidelines in respect of performing/monitoring the sedation/anaesthesia procedures in private/public setting for both medical practitioners and dentists who may come across such procedures during their practice of medicine.



### 延續醫學教育小組委員會

教育委員會下，設立一個延續醫學教育小組委員會，專責管理由香港醫務委員會舉辦的延續醫學教育之事宜，正式名稱為「為非依從專科醫生延續醫學教育的執業醫生開辦的延續醫學教育課程」(香港醫務委員會延續醫學教育課程)。小組委員會負責審核及給予延續醫學教育課程提供者提供的延續醫學教育活動學分，透過分科學院的支持，計劃及提供每年的延續醫學教育活動予向學院及包括向其他延續醫學教育管理者登記的參加人士。小組委員會主席由蔡惠宏醫生出任。

小組委員會建議而教育委員會已於二零一零年二月通過香港醫務委員會延續醫學教育課程的一些政策改變，註冊者必須繳交一次性的每個循環行政費，而不是以前的年費；而註冊者如果已經轉到其他機構，作為他們的行政管理者，將不可以在同一個循環內再向學院重新登記。但在一個循環結束後，他們就可以立即登記加入。

### 香港醫務委員會延續醫學教育課程

香港醫務委員會由二零零一年開始推行，為非依從專科醫生延續醫學教育的執業醫生開辦的延續醫學教育課程。學院負責課程管理、評核和提供課程。作為評核機構，學院必需要建立一個穩健的制度，協調與其他評核機構的工作。教育委員會其下的延續醫學教育小組委員會，負責監管課程運作。截至二零一零年八月一日，共有九百七十一名醫生分別透過分科學院或直接向學院登記，參與此課程。二零零九年八月至二零一零年七月，學院已經提供了超過二千四百個小時的延續醫學教育課程，包括了分科學院舉辦的課程，並開放予非院士參加。

類別	課程數目	延續醫學教育小時
會談/演講/會議/討論會/座談會	99	173
課堂	121	390
討論	80	96
會議	787	1466
發表報告	137	194
自修	10	16
視象學習	15	22
工作坊	32	96
<b>總數：</b>	<b>1,281</b>	<b>2,453</b>

二零零九年八月至二零一零年七月期間，共有七百九十五名人士出席特設的演講。學院也向出席學院專為這批醫生而舉辦的延續醫學教育活動進行問卷調查，共收回三百四十四份完成之問卷。約三百二十六名參加的醫生(百分之九十四點七七)的參加者對活動的評價為「好」或「非常好」。

### 臨床指引

教育委員會成立了一個工作小組，為公營或私營的醫生和牙醫，可能在工作中遇到的鎮靜 / 麻醉程序制定指引。

Comments were sought from different Colleges when drafting these guidelines. A set of guidelines, with clearly specified requirements on drugs, facilities and equipments in the location performing sedations, was subsequently approved by Education Committee and endorsed by Council in December 2009. The guidelines serve to recommend and ensure a minimum standard of safety measures for the sedation of patients to facilitate unpleasant diagnostic or minor surgical procedures across the different disciplines. The Guidelines have been sent to the Medical Council, Dental Council, Hospital Authority, Department of Health and private hospitals. Electronic version has also been uploaded to the Academy website. The Working Group would coordinate with Colleges to organize courses about the competencies needed for doctors/dentists/dental surgery assistants/ nurses when carrying out the procedures.

The Working Group also studied the need for establishing other clinical guidelines involving multiple specialties and would make recommendation to the Education Committee in due course.

### **Position Paper on Postgraduate Medical Education**

After the workshop held on 6 June 2009, the Education Committee has formed a working group to prepare a position paper on postgraduate medical education for further discussion within the Academy. The paper serves to highlight the proposed key reforms to postgraduate medical education that are required to modernise the Fellowship training system such that the Academy will produce Fellows meeting the needs of the society in a sustainable manner.

After a series of discussion, a final paper was presented to Council in July 2010. Besides the recommendations, the paper also suggested that it is the appropriate time for the Academy to consider whether there is a need to set up an Education Unit to collaborate with and complement the training activities of the Colleges.

### **Working Group on Simulation**

The Academy and the Hospital Authority would collaborate to look into wider utilization of simulation in training, which could be widely used in various specialties. A joint Working Group was established to formulate policies and strategies for simulation trainings. There was suggestion that Fellows should also be allowed to use simulation facilities for continuous learning.

A visit to the Israel Simulation Centre, one of the most established centers in the world, would be organized in November 2010. A visit to an established simulation center in Guangzhou was also arranged in August 2010.

### **Working Group on Doctor Work Reform (DWR)**

As suggested by the DWR Working Group, the Academy would accept that there are long term impacts of DWR and would take a more comprehensive approach to enhance the quality of postgraduate medical education. There would be long term commitment from Academy/Colleges to ensure that quality of training will not be affected by work hour limitation.

It is believed that the change of culture and attitude of trainees should have greater impact than reduction of work hours on training. The Education Committee supported the Working Group's suggestion to conduct regular trainee and trainer surveys regarding their perception on quality of training, which should be useful for Colleges and the Academy.

在草擬指引時，工作小組諮詢了不同分科學院的意見，最後，一份有關於使用鎮靜程序中，對藥物、設施及設備的特定要求的詳細指引於二零零九年十二月獲得教育委員會及院務委員會通過。這份指引的主要目的是建議及確保為不同專科的病人進行麻醉的時候能有最基本的安全措施，確保細小的診斷或手術都能順利進行。指引已經交予醫務委員會、牙醫管理委員會、醫院管理局、衛生署及私家醫院。學院的網站也有電子版。工作小組將和分科學院聯合為醫生/ 牙醫/ 牙醫助理/ 護士舉辦課程，教導他們進行有關程序的要求。

工作小組也研究了為牽涉幾個分科學院而制定的其他臨床指引的需要性，並將適時向教育委員會提交建議。

### **畢業後醫學教育文件**

在二零零九年六月六日舉行過研討會後，教育委員會成立了一個工作小組，就畢業後醫學教育擬定文件，方便學院進行深入討論。文件點明了畢業後醫學教育為學員培訓改革而作出的改變，學院將持續為社區培訓符合大眾期望的院士。

經過連串討論後，小組在二零一零年七月向院務委員會提交文件定稿。此外，文件更建議學院考慮現在是否有需要建立一個教育小組，專責協調和完成分科學院的培訓活動。

### **模擬訓練工作小組**

學院與醫院管理局會合作研究在不同專科的培訓過程中運用更多模擬訓練的可行性。成立了一個聯合工作小組，負責制定模擬訓練的政策。也有建議院士在延續醫學教育中可以應該利用模擬設施。

二零一零年十一月將安排參觀世界上設備最完善的模擬中心，Israel Simulation Centre。二零一零年八月也安排了參觀過一個位於廣州的著名模擬中心。

### **醫生工作改革工作小組**

經工作小組建議後，學院接受醫生工作改革將有長遠的影響，並將採用一個全面的措施去提升畢業後醫學教育的質素。分科學院及學院將有長遠的承諾，保證學員的培訓水平不會因為工時的限制而受到影響。

相信學員在文化和態度的改變所帶來的影響將比減少培訓時間的影響更大。教育委員會支持工作小組建議，進行定期的導師和學員的調查，希望知道他們對培訓質素的看法，這對分科學院和學院來說是非常重要的資訊。

## Report of the Review Visit on Medical Education and Training of the Universities in Hong Kong

A recommendation in this report of the Medical Council suggested reviewing postgraduate training requirements of Family Medicine in view of the disparity of 6 years required in Hong Kong compared to 2-3 years in overseas jurisdictions. The College of Family Physicians was requested to submit their views to the Academy on this with information on FM training in other countries

### Leave for Research

The Academy Council received feedback from trainees that they had difficulty applying leaves from Colleges to conduct research. The Education Committee was asked to consider and review this. It was noted that some Colleges already allowed trainees to take up research position during the elective period with prior approval. The Committee agreed the principle to facilitate trainees to do research. This can be done by either allowing a trainee to take up a research post during the elective period if the training programme has the provision for an elective period, or making provision for interruption of training should trainee need to take leaves for conducting researches. Prior approval from the College is required.

### Collaboration with Department of Health – Treatment of Tobacco Dependence

The Education Committee noted the proposed collaboration between the Academy and Department of Health. As requested by Council, the Committee discussed whether treatment of tobacco dependence should be incorporated into training and examinations of all Colleges. Certain Colleges have already included this in their training or examinations, though not explicitly written in the formal documents. The Committee agreed that Colleges might consider accrediting courses relating to smoking cessation for CPD purposes.

### Other Updates

During the year, the Education Committee has revised the “Guidelines for Admission of First Fellows in New Subspecialty”; endorsed updates of accredited training units/training documents submitted by Colleges; revised the checklist and assessment sheet for Certification for Specialist Registration applications; adopted a template for reporting accreditation of training units, and approved the request of College of Surgeons to change the Chinese title of “Neurosurgery” from “腦外科” to “神經外科”.

### Best Original Research by Trainees (BORT)

This prize aims to recognise excellence in research performed by trainees. Results of the 2009 BORT are: -

MEDAL	WINNER (College)	TITLE OF RESEARCH
Gold Medal	Dr. CHUI, Lap Bun (College of Surgeons)	Prospective randomized controlled trial comparing light-weighted versus heavy-weighted mesh in chronic pain incidence after TEP repair of bilateral inguinal hernia
Silver Medal	Dr. LEUNG, Shuk Yan Joey (College of Psychiatrists)	Facial emotion recognition in Chinese with schizophrenia at early and chronic stages of illness
Bronze Medal	Dr. CHUNG, Yeung Vera (College of Surgeons)	Marginal donors in renal transplantation: our 10-year experience



## 香港大學的醫學教育及培訓考察報告

在醫務委員會的這個報告裡，建議檢討家庭醫學在香港要求六年培訓而海外其他國家只要求兩到三年的培訓。學院要求香港家庭醫學學院就這個議題提交意見，並同時提交有關其他國家在家庭醫學培訓方面的資料。

### 做研究的假期

院務委員會收到學員反映，指他們很難向分科學院申請假期做研究。教育委員會被要求考慮及檢討這個情況。委員會留意到有些分科學院已經允許學員在事先申請的情況下，可以在選修時期做一些研究工作的職位。委員會原則上同意應該協調學員進行研究。這可以是允許學員在選修時期擔當研究工作的職位，前提是必須有選修的時間；或者是讓學員可以在需要進行研究工作的時候，暫時停止培訓，之後再繼續。當然，事先必須向分科學院申請，並獲得批准。

### 與衛生署合作 — 煙癮治療

委員會留意到有關學院與衛生署就這方面的合作建議。按院務委員會要求，委員會討論了究竟煙癮的治療是否歸入分科學院的培訓和考試之中。部份分科學院雖然沒有明文列出，但已經把煙癮治療納入他們的培訓和考試裡。委員會同意分科學院可能要考慮讓有關戒煙的課程也給予學分，作為持續專業發展之一。

### 其他報告

今年，委員會修改了「新專科接納首批院士指引」；通過了分科學院提交的培訓基地更新；修改了申請專科註冊證書的審核資料名單及評審表格；統一了培訓基地審核的報告格式及通過外科醫學院要求將「腦外科」改成「神經外科」的要求。

### 最佳學員原創研究獎(BORT)

設立此獎的目的在於表揚學員在研究方面的傑出成績，二零零九年「最佳學員原創研究獎」得主為：

獎章	得主 (分科學院)	研究題名
金獎	徐立斌醫生 (外科醫學院)	Prospective randomized controlled trial comparing light-weighted versus heavy-weighted mesh in chronic pain incidence after TEP repair of bilateral inguinal hernia
銀獎	梁淑恩醫生 (精神科醫學院)	Facial emotion recognition in Chinese with schizophrenia at early and chronic stages of illness
銅獎	鍾楊醫生 (外科醫學院)	Marginal donors in renal transplantation: our 10-year experience

## Finance and Investment Committee

The Committee met quarterly to discuss investment strategy and other matters relating to the Academy's finance. Since the existing Financial Policy was established over 15 years ago, the Committee has reviewed the policy and proposed some revisions. Major changes include (a) allowing flexibility for single quotation/tender under certain circumstances, and (b) revision on authorization of commitment due to expansion of the Academy office.

During the year, the Committee made several recommendations to the Council, such as appointing a business manager or an agent to solicit more income for *Hong Kong Medical Journal* and other journals using publishing services of the HKAM Press; and setting up a planning committee to make long-term plans, including financial plans, for the Academy.

## House Committee

The Academy Building has been running for more than 10 years. Improvement and renovation works have been carried out throughout the year. Works, including the cleaning of the external wall of the Building, and the refurbishment of the wooden veneer at Grand Hall, have brought a fresher look to the Building and the venue.

The condition of the forecourt has been deteriorating over the years. The Academy appointed a consultant to advise on improvement, and a thorough inspection of the forecourt was done. Based on the findings and the recommendations, an overall replacement of the floor finishes for the forecourt and the ramp to the car park was carried out and completed in September. This would solve the problems of loosen floor tiles and water leakage, and would prolong the durability of the forecourt. To enhance the safety standard of the lifts, additional safety devices were also installed to all the lift cars at the Academy Building. To help make the Building better known to visitors and the general public, the name of the Academy, both in Chinese and English, is now being installed at the external wall next to the Academy logo.

The current facility management contract will expire by the end of December 2010. The Committee has invited four companies to submit proposals. The selection process is now being conducted. The new contract will be awarded to the company that can benefit the Academy the most. The catering contract had expired in December 2009 and was extended for a further term of 2 years according to the provision in the agreement.

During the year, the Committee has established a set of guidelines regarding dissemination of information to Fellows via e-news or e-blast, and revised the Code of Conduct for staff. The Committee also approved to purchase more examination tables in order to accommodate larger scale examinations held at the Building.

## Membership Committee

The Academy received 155 nominations for Fellowship from the Colleges between July and December 2009. They were all vetted by the Membership Committee and recommended to the Council for approval. These new Fellows were formally admitted at the AGM on 18 December 2009 and received their Fellowship on the same evening during the conferment ceremony.

From January to June 2010, 87 nominations for Academy Fellowship were vetted by the Committee and approved by Council. They were formally passed at the Extraordinary General Meeting held on 17 June 2010 and will be conferred at the ceremony in the coming December.

委員會每季都舉行會議，除商討學院的投資策略外，也討論了學院的其他財務安排。由於現在的財務政策已經是十五年前制定，委員會檢討了政策並提議作出部份修改。主要修改包括1)在部份情況下，容許只有一個報價/投標，增加彈性，及2)由於學院辦公室的擴充，修改了委員會的批款購備材料範圍，增加靈活度。

這個年度內，委員會向院務委員會作出了幾項建議，例如聘請一位業務經理或一家公司來為《香港醫學雜誌》及香港醫學專科學院出版社其他負責的刊物開拓收入來源；成立一個計劃委員會，來進行長遠的計劃，包括了學院的財務安排。

## 內務委員會

學院大樓落成經已十年有多，今年我們進行了很多的修葺工作，包括了清潔大廈外牆及翻新大禮堂內的木飾，大禮堂及大廈煥然一新。

大樓前院耗損情況嚴重，因此學院委任了顧問公司就維修工程提供意見，並就前院的情況進行了調查 / 檢查。根據得到的資料和建議，學院把通往停車場的斜路和前院的地下重新換過，工程已於九月竣工。往後，就不會再有地磚鬆脫、漏水等問題，同時前院也更加耐用。為了提升電梯的安全性，學院大樓內的所有電梯將會安裝額外的安全設備。為了推廣學院大樓，在邵逸夫大禮堂外牆的學院標誌旁邊，將會寫有學院的中英文名字，希望可以增加訪客和公眾對學院的認識。

現在的管理公司合約將於二零一零年十二月底屆滿，委員會已經邀請了幾家公司提交建議書，委員會正在進行遴選程序，將會挑選對學院管理發展最有利的管理公司。餐飲服務的合約也於二零零九年十二月屆滿，並已經根據合約的同意條款，續約兩年。

今年，委員會就利用電郵方式宣傳院士的資料訂立了一套指引，同時修改了員工手冊。委員會也購買了更多的考試桌，方便將來在學院大樓舉行大型的考試。

## 會籍委員會

委員會於二零零九年七月至十二月期間，審核了由十五個分科學院提名的一百五十五個院士申請，並提交院務委員會，於二零零九年十二月十八日的週年大會上獲得通過。當日，更舉辦了院士頒授儀式，正式收納這批新院士。

二零一零年一月至六月，委員會審核了八十七個院士申請，並獲院務委員會通過，並於二零一零年六月十七日舉行的特別會員大會上通過。這批院士將於十二月舉行的週年大會上正式獲頒授院士文憑。

## Past Presidents Advisory Committee

The Committee met three times over the past year, during which past presidents of the Academy and Colleges were briefed on the Academy's current affairs. Issues that the Council has been deliberating on, such as medical professional liability, impact of doctor work reform, training for expert witness, and utilization of simulation in training, were reported to members. Their many useful comments and advice had been passed back to the Council for consideration.

## Public Relations Committee

The Committee appointed a PR firm on a 1-year contract basis starting from October 2009 to carry out various image building activities to help the Academy raise public awareness, and strengthen ties with the media.

The Committee has arranged television and newspaper interviews for representatives from various Colleges to explain different diseases to the public. Furthermore, some Colleges have regular newspaper



columns which introduce general knowledge to



the public. Such media activities go some way towards enhancing the profile of Colleges. In March, the Committee also arranged a press conference for the Academy's Think Tank to release their research results on the topic of "A Study on the Requirements of Medical Services of Elderly Citizens in Hong Kong".

## Publications Committee

The Press had a very active and challenging year. It took over the publication of two titles, *Journal of the Hong Kong College of Radiologists* and the *Hong Kong Journal of Ophthalmology*, for the respective Academy Colleges. The Press has also made its first foray into publishing for the social sciences community. The inaugural issue of the *Asian Journal of Gambling Issues and Public Health* (AJGIPH) will be published for the Professional Practice and Assessment Centre, Department of Applied Social Sciences, Hong Kong Polytechnic University, by the end of 2010. The AJGIPH is a peer-reviewed interdisciplinary journal, which aims to share research on gambling and to engage professionals in the critical discussion of gambling policy and related public health issues for the Asian communities.

Apart from journals, monograph publishing is another business sector for the Press. A monograph for the College of Surgeons of Hong Kong, *Healing with the Scalpel: From the First Colonial Surgeon to the College of Surgeons of Hong Kong*, was published in September. This monograph provides a comprehensive account of the milestones of the development and history of surgery in Hong Kong.



## 前任主席顧問委員會

顧問委員會主要就學院和分科學院的發展及政策，向法院務委員會提出意見。委員會共開了三次會議，向法院務委員會提出很多有建設性的意見及建議。

院務委員會就專業醫療賠償、醫生工作改革的影響、專業證人培訓及模擬培訓的充份應用等各方面的討論向委員會匯報，委員會也向法院務委員會回應了很多有用的建議和意見。

## 公共關係委員會

公共關係委員會由去年九月開始，委任了一家公關公司為學院推廣公關活動，為期一年，以提高學院對外的聯繫，增加大眾對學院的認知。

委員會安排不同的分科學院代表接受電台和報紙媒體的訪問，向公眾解釋一些疾病的治療方法。此外，部份分科學院也開始定期在報紙專欄寫一些大眾關心的健康議題。藉著這些活動，提升分科學院的知名度。今年三月，委員會為智囊小組舉行了一個記者會，公佈小組對「本港長者醫療服務需要研究」的研究結果。

## 出版委員會

香港醫學專科學院出版社今年的工作既繁忙，亦充滿挑戰性。出版社新增了分別為兩間分科學院出版的《香港放射科醫學院雜誌》及《香港眼科學刊》，而且更首次進軍社會科學界別，為香港理工大學應用社會科學系的專業實踐及評估中心出版了 *Asian Journal of Gambling Issues and Public Health*。這本期刊屬於由同業評核的跨界別刊物，目的是分享有關賭博的研究，集合亞洲地區各專業對賭博政策的熾熱討論及與公眾健康有關的議題。



除期刊外，專論出版也是出版社另一個工作範疇。一本名為《香港外科發展一百五十年》的專題集已於九月出版，這本為香港外科醫學院出版的專題集詳細介紹了香港外科的發展及其重要的里程碑。

Another strand of the Press's strategy has been to embrace the opportunities presented by the Internet age. The Hong Kong Medical Journal launched an Online Forum and Video Room this year; the former to create a robust discussion environment for the readers and the latter to present interviews and clinical/surgical procedures related to the papers published in the Journal.

Journals published by the Press:

- *Asian Journal of Gambling Issues and Public Health*
- *Asian Journal of Gerontology and Geriatrics*
- *East Asian Archives of Psychiatry (formerly Hong Kong Journal of Psychiatry)*
- *Hong Kong Dental Journal*
- *Hong Kong Medical Journal*
- *Hong Kong Journal of Gynaecology, Obstetrics and Midwifery*
- *Hong Kong Journal of Ophthalmology*
- *Journal of Orthopaedic Surgery*
- *Journal of the Hong Kong College of Radiologists*

## ■ Election

Pursuant to the HKAM Ordinance, an election has been conducted for the posts of the 6 Officers. The notice and nomination form were sent to Council Members on 18 June 2010. The following nominations were received by the deadline of 23 August 2010. As there is only one nomination for each of the 6 posts, the candidates will be elected to their respective post ipso facto. The results of the election will be announced at the coming AGM in December.

POST	NOMINEE
President	Raymond LIANG
Vice-President (General Affairs)	Donald LI
Vice-President (Education & Examinations)	C.T. HUNG
Honorary Secretary	Louis CHOW
Honorary Treasurer	Stephen FOO
Editor	Ignatius YU

**Louis Chow**  
Honorary Secretary  
(September 2010)

此外，藉著互聯網發展所帶來的機會，《香港醫學雜誌》的網站開設了討論區及視頻區。討論區為讀者提供了一個交流意見的環境，視頻區亦載有有關出版文章的訪問片段及臨床或手術過程，供讀者分享。

出版社出版的期刊包括：

- *Asian Journal of Gambling Issues and Public Health*
- 《亞洲老年學及醫學雜誌》
- 《東亞精神科學誌》
- 《香港牙科醫學雜誌》
- 《香港醫學雜誌》
- 《香港婦產助產科雜誌》
- 《香港眼科學刊》
- *Journal of Orthopaedic Surgery*
- 《香港放射科醫學院雜誌》

## 選舉

根據香港醫學專科學院條例，六名幹事必須經過選舉產生，學院於二零一零年六月十八日寄出選舉通知書及提名表格予院務委員。至二零一零年八月二十三日截止提名，由於每個職銜只收到一份候選名單，候選人自動當選。

職銜	候選人
主席	梁憲孫
副主席(一般事務)	李國棟
副主席(教育及考試事務)	熊志添
名譽秘書	周永昌
名譽司庫	傅鑑蘇
編輯	余德新

**周永昌**

名譽秘書

(二零一零年九月)

---

## ***Honorary Treasurer's Report***

---

26

The Academy recorded a consolidated surplus of \$2.6M for the year. An impairment loss of around \$22M was recorded on book last year due to the global financial tsunami. But the market situation has improved much since then, and the market prices of the investment held by the Academy and Foundation Fund has returned nearly back to the level before the tsunami. The Academy would continue its conservative approach and hold its stocks and bonds for long-term investment purpose.

On behalf of the Academy, I would like to thank the members of the Finance & Investment Committee for their time and effort in helping the Academy keep a healthy position in its finance.

**Stephen Foo**

Honorary Treasurer  
(September 2010)

---

## **名譽司庫報告**

---

學院錄得二百六十萬盈餘。由於全球金融海嘯的影響，學院賬面損失了二千二百萬。但之後市場逐漸恢復，學院及學院基金所持有的投資市場價格已經幾乎回升到海嘯前的水平。學院會繼續保守的投資策略，繼續持有股票和債券，作為長遠的投資。

本人謹代表學院，感謝財務委員會所有委員付出寶貴的時間和精力，令學院財政得以保持穩健。

**傅鑑蘇**

名譽司庫  
(二零一零年九月)





Hong Kong Academy of Medicine  
香港醫學專科學院

31 December 2009





## Independent auditor's report to the Council of Hong Kong Academy of Medicine ("the Academy")

*(Established in Hong Kong)*

We have audited the financial statements of Hong Kong Academy of Medicine ("the Academy") and its special purpose entity, The Hong Kong Academy of Medicine Foundation Fund (collectively "the group") set out on pages 3 to 27, which comprise the consolidated and the Academy balance sheets as at 31 December 2009, the consolidated income and expenditure account, the consolidated statement of comprehensive income, the consolidated statement of changes in reserve and funds and the consolidated cash flow statement for the year then ended, and a summary of significant accounting policies and other explanatory notes.

### **Council's responsibility for the financial statements**

The Council is responsible for the preparation and the true and fair presentation of these financial statements in accordance with Hong Kong Financial Reporting Standards issued by the Hong Kong Institute of Certified Public Accountants and the Hong Kong Academy of Medicine Ordinance. This responsibility includes designing, implementing and maintaining internal control relevant to the preparation and the true and fair presentation of financial statements that are free from material misstatement, whether due to fraud or error; selecting and applying appropriate accounting policies; and making accounting estimates that are reasonable in the circumstances.

### **Auditor's responsibility**

Our responsibility is to express an opinion on these financial statements based on our audit. This report is made solely to you, as a body, in accordance with section 14 of the Hong Kong Academy of Medicine Ordinance, and for no other purpose. We do not assume responsibility towards or accept liability to any other person for the contents of this report.

We conducted our audit in accordance with Hong Kong Standards on Auditing issued by the Hong Kong Institute of Certified Public Accountants. Those standards require that we comply with ethical requirements and plan and perform the audit to obtain reasonable assurance as to whether the financial statements are free from material misstatement.

An audit involves performing procedures to obtain audit evidence about the amounts and disclosures in the financial statements. The procedures selected depend on the auditor's judgement, including the assessment of the risks of material misstatement of the financial statements, whether due to fraud or error. In making those risk assessments, the auditor considers internal control relevant to the entity's preparation and true and fair presentation of the financial statements in order to design audit procedures that are appropriate in the circumstances, but not for the purpose of expressing an opinion on the effectiveness of the entity's internal control. An audit also includes evaluating the appropriateness of accounting policies used and the reasonableness of accounting estimates made by the council members, as well as evaluating the overall presentation of the financial statements.



Independent auditor's report to the Council of  
Hong Kong Academy of Medicine ("the Academy")  
(continued)  
*(Established in Hong Kong)*

**Auditor's responsibility (continued)**

We believe that the audit evidence we have obtained is sufficient and appropriate to provide a basis for our audit opinion.

**Opinion**

In our opinion, the financial statements give a true and fair view of the state of the affairs of the Academy and the group as at 31 December 2009 and of the group's surplus and cash flows for the year then ended in accordance with Hong Kong Financial Reporting Standards and have been properly prepared in accordance with the Hong Kong Academy of Medicine Ordinance.

Certified Public Accountants

8th Floor, Prince's Building  
10 Chater Road  
Central, Hong Kong

15 JUL 2010

**Consolidated income and expenditure account  
for the year ended 31 December 2009**  
(Expressed in Hong Kong dollars)

	Note	2009	2008
<b>Principal source of revenue</b>	4	\$ 18,125,668	\$ 11,783,469
Other revenue	5	<u>18,164,660</u>	<u>20,411,971</u>
		\$ 36,290,328	\$ 32,195,440
Depreciation	8	(1,880,425)	(2,196,961)
Salaries, wages and other benefits		(8,461,204)	(7,801,888)
Contributions to defined contribution retirement plans		(587,332)	(536,729)
Other operating expenses		(18,134,907)	(19,077,723)
Available-for-sale securities: reclassified from equity			
- on disposal		(4,634,500)	-
- on impairment		<u>-</u>	<u>(21,989,217)</u>
<b>Surplus/(deficit) for the year</b>	6	<u>\$ 2,591,960</u>	<u>\$ (19,407,078)</u>

The notes on pages 10 to 27 form part of these financial statements.

**Consolidated statement of comprehensive income  
for the year ended 31 December 2009**  
(Expressed in Hong Kong dollars)

	2009	2008
<b>Surplus/(deficit) for the year</b>	\$ 2,591,960	\$ (19,407,078)
<b>Other comprehensive income for the year</b>		
Available-for-sale securities: - Changes in fair value reserve	<u>24,007,185</u>	<u>(9,992,641)</u>
<b>Total comprehensive income for the year</b>	<u>\$ 26,599,145</u>	<u>\$ (29,399,719)</u>

The notes on pages 10 to 27 form part of these financial statements.



Consolidated balance sheet at 31 December 2009  
(Expressed in Hong Kong dollars)

	Note	2009	2008
<b>Non-current assets</b>			
Fixed assets	8(a)	\$ 6,213,059	\$ 5,976,976
Available-for-sale securities	10	<u>84,625,283</u>	<u>63,434,758</u>
		<u>\$ 90,838,342</u>	<u>\$ 69,411,734</u>
<b>Current assets</b>			
Inventories		\$ 89,704	\$ 73,600
Debtors, deposits and prepayments	11	2,660,033	2,739,750
Government grants receivable		-	3,198,260
Cash and cash equivalents	12	<u>62,939,806</u>	<u>55,883,877</u>
		<u>\$ 65,689,543</u>	<u>\$ 61,895,487</u>
<b>Current liabilities</b>			
Receipts in advance		\$ 169,561	\$ 570,175
Creditors and accrued charges	13	<u>4,028,705</u>	<u>5,006,572</u>
		<u>\$ 4,198,266</u>	<u>\$ 5,576,747</u>
<b>Net current assets</b>		<u>\$ 61,491,277</u>	<u>\$ 56,318,740</u>
<b>Net assets</b>		<u>\$152,329,619</u>	<u>\$125,730,474</u>
<b>Reserve and funds</b>	15(b)		
Fair value reserve		\$ 23,101,846	\$ (905,339)
Foundation fund		30,861,166	30,861,166
General fund		<u>98,366,607</u>	<u>95,774,647</u>
		<u>\$152,329,619</u>	<u>\$125,730,474</u>

Approved and authorised for issue by the Council on 15 JUL 2019

Anthony 15/7/10 )  
 )  
 ) President  
 )

The notes on pages 10 to 27 form part of these financial statements.

## Balance sheet at 31 December 2009

(Expressed in Hong Kong dollars)

	Note	2009	2008
<b>Non-current assets</b>			
Fixed assets	8(b)	\$ 6,213,059	\$ 5,976,976
Available-for-sale securities	10	<u>34,055,349</u>	<u>20,264,991</u>
		<u>\$ 40,268,408</u>	<u>\$ 26,241,967</u>
<b>Current assets</b>			
Inventories		\$ 89,704	\$ 73,600
Debtors, deposits and prepayments	11	2,081,142	2,195,244
Government grants receivable		-	3,198,260
Amount due from special purpose entity	14	25,314	21,427
Cash and cash equivalents	12	<u>31,881,343</u>	<u>28,686,546</u>
		<u>\$ 34,077,503</u>	<u>\$ 34,175,077</u>
<b>Current liabilities</b>			
Receipts in advance		\$ 169,561	\$ 570,175
Creditors and accrued charges	13	<u>4,002,705</u>	<u>4,982,572</u>
		<u>\$ 4,172,266</u>	<u>\$ 5,552,747</u>
<b>Net current assets</b>		<u>\$ 29,905,237</u>	<u>\$ 28,622,330</u>
<b>Net assets</b>		<u>\$ 70,173,645</u>	<u>\$ 54,864,297</u>
<b>Reserve and funds</b>			
Fair value reserve	15	\$ 11,278,360	\$ (290,984)
General fund	15	<u>58,895,285</u>	<u>55,155,281</u>
		<u>\$ 70,173,645</u>	<u>\$ 54,864,297</u>

Approved and authorised for issue by the Council on 15 JUL 2010



President

The notes on pages 10 to 27 form part of these financial statements.

## Consolidated statement of changes in reserve and funds for the year ended 31 December 2009

(Expressed in Hong Kong dollars)

	<i>Fair value reserve</i>	<i>Foundation fund</i>	<i>General fund</i>	<i>Total</i>
<b>At 1 January 2008</b>	\$ 9,087,302	\$ 30,861,166	\$ 115,181,725	\$ 155,130,193
Total comprehensive income for the year	<u>(9,992,641)</u>	<u>-</u>	<u>(19,407,078)</u>	<u>(29,399,719)</u>
<b>At 31 December 2008</b>	<u>\$ (905,339)</u>	<u>\$ 30,861,166</u>	<u>\$ 95,774,647</u>	<u>\$ 125,730,474</u>
<b>At 1 January 2009</b>	\$ (905,339)	\$ 30,861,166	\$ 95,774,647	\$ 125,730,474
Total comprehensive income for the year	<u>24,007,185</u>	<u>-</u>	<u>2,591,960</u>	<u>26,599,145</u>
<b>At 31 December 2009</b>	<u>\$ 23,101,846</u>	<u>\$ 30,861,166</u>	<u>\$ 98,366,607</u>	<u>\$ 152,329,619</u>

The notes on pages 10 to 27 form part of these financial statements.

**Consolidated cash flow statement  
for the year ended 31 December 2009**  
(Expressed in Hong Kong dollars)

	Note	2009	2008
<b>Operating activities</b>			
Surplus/(deficit) for the year	\$	2,591,960	\$ (19,407,078)
Adjustments for:			
- Depreciation		1,880,425	2,196,961
- Loss on disposal of fixed assets		24,507	-
- Loss on disposal of available-for-sale securities		4,634,500	-
- Interest income		(2,257,756)	(3,152,333)
- Dividend income from listed securities		(1,464,583)	(2,225,867)
- (Reversal)/recognition of impairment losses on available-for-sale securities		<u>(600,615)</u>	<u>21,989,217</u>
<b>Operating profit/(loss) before changes in working capital</b>	\$	4,808,438	\$ (599,100)
(Increase)/decrease in inventories		(16,104)	12,761
Decrease/(increase) in government grants receivable		3,198,260	(1,692,828)
(Decrease)/increase in receipts in advance		(400,614)	380,919
(Decrease)/increase in creditors and accrued charges		<u>(977,867)</u>	<u>2,047,166</u>
<b>Net cash generated from operating activities</b>	\$	<u>6,612,113</u>	\$ <u>148,918</u>
<b>Investing activities</b>			
Purchase of fixed assets	\$	(2,141,015)	\$ (703,529)
Purchase of available-for-sale securities		(3,186,293)	(8,025,000)
Proceeds from sale of available-for-sale securities		3,100,000	-
Interest received		2,337,473	3,262,448
Dividend received from listed securities		<u>333,651</u>	<u>368,024</u>
<b>Net cash generated from/(used in) investing activities</b>	\$	<u>443,816</u>	\$ <u>(5,098,057)</u>



**Consolidated cash flow statement  
for the year ended 31 December 2009 (continued)**  
*(Expressed in Hong Kong dollars)*

	<i>Note</i>	<i>2009</i>	<i>2008</i>
<b>Net increase/(decrease) in cash and cash equivalents</b>		\$ 7,055,929	\$ (4,949,139)
<b>Cash and cash equivalents at 1 January</b>		<u>55,883,877</u>	<u>60,833,016</u>
<b>Cash and cash equivalents at 31 December</b>	12	<u>\$ 62,939,806</u>	<u>\$ 55,883,877</u>

The notes on pages 10 to 27 form part of these financial statements.

## Notes to the financial statements

(Expressed in Hong Kong dollars)

### 1 Status of the Academy

The Academy was established as a body corporate under the Hong Kong Academy of Medicine Ordinance on 1 August 1992. The principal activities of the Academy are to promote and advance the science of medicine by education and exchange of information as well as to improve the standard of local health care.

### 2 Significant accounting policies

#### (a) Statement of compliance

These financial statements have been prepared in accordance with all applicable Hong Kong Financial Reporting Standards ("HKFRSs"), which collective term includes all applicable individual Hong Kong Financial Reporting Standards, Hong Kong Accounting Standards ("HKASs") and Interpretations issued by the Hong Kong Institute of Certified Public Accountants ("HKICPA") and accounting principles generally accepted in Hong Kong. A summary of the significant accounting policies adopted by the group is set out below.

The HKICPA has issued certain new and revised HKFRSs that are first effective for the current accounting period of the group and the Academy. Note 3 provides information on any changes in accounting policies resulting from initial application of these developments to the extent that they are relevant to the group for the current and prior accounting periods reflected in these financial statements.

The group has not applied any new standard or interpretation that is not yet effective for the current accounting period (note 19).

#### (b) Basis of preparation of the financial statements

The measurement basis used in the preparation of the financial statements is the historical cost basis except that financial instruments classified as available-for-sale securities are stated at fair value as explained in the accounting policies set out below.

The preparation of financial statements in conformity with HKFRSs requires management to make judgements, estimates and assumptions that affect the application of policies and reported amounts of assets, liabilities, income and expenses. The estimates and associated assumptions are based on historical experience and various other factors that are believed to be reasonable under the circumstances, the results of which form the basis of making the judgements about carrying values of assets and liabilities that are not readily apparent from other sources. Actual results may differ from these estimates.

The estimates and underlying assumptions are reviewed on an ongoing basis. Revisions to accounting estimates are recognised in the period in which the estimate is revised if the revision affects only that period, or in the period of the revision and future periods if the revision affects both current and future periods.

## 2 Significant accounting policies (continued)

### (c) *Special purpose entities*

A special purpose entity is an entity which the Academy has the power, directly or indirectly, to govern the financial and operating policies of an entity so as to obtain benefits from its activities.

A special purpose entity is consolidated on a line-by-line basis by adding together items such as assets, liabilities, reserves and funds, income and expenses.

Intra-group balances and transactions, and any unrealised profit arising from intra-group transactions are eliminated in full in preparing the consolidated financial statements. Unrealised losses resulting from intra-group transactions are eliminated in the same way as unrealised gains, but only to the extent that there is no evidence of impairment.

### (d) *Fixed assets*

Fixed assets are stated in the balance sheets at cost less accumulated depreciation and any impairment losses.

Depreciation is calculated to write off the cost of items of fixed assets using the straight line method over their estimated useful lives as follows:

Property	25 years
Other fixed assets	5 years

Both the useful life of an asset and its residual value, if any, are reviewed annually.

The carrying amounts of fixed assets are reviewed for indications of impairment at each balance sheet date. An impairment loss is recognised to the extent that the carrying amount of an asset, or the cash-generating unit to which it belongs, is more than its recoverable amount. The recoverable amount of an asset, or of the cash-generating unit to which it belongs, is the greater of its net selling price and value in use. In assessing value in use, the estimated future cash flows are discounted to their present value using a pre-tax discount rate that reflects current market assessments of time value of money and the risks specific to the assets. An impairment loss is reversed if there has been a favourable change in estimates used to determine the recoverable amount.

Gains or losses arising from the retirement or disposal of an item of fixed asset are determined as the difference between the estimated net disposal proceeds and the carrying amount of the item and are recognised in the income and expenditure account on the date of retirement or disposal.

## 2 Significant accounting policies (continued)

### (e) Inventories

Inventories are carried at the lower of cost and net realisable value. Net realisable value is the estimated selling price in the ordinary course of business less the estimated costs necessary to make the sale.

### (f) Investments in debt and equity securities

Investments are recognised/derecognised on the date the Academy or the group commits to purchase/sell the investments or they expire. Investments in debt and equity securities are initially stated at cost, which is their transaction price unless fair value can be more reliably estimated using valuation techniques whose variables include only data from observable markets. Cost includes attributable transaction costs. These investments are subsequently accounted for as follows:

#### *Available-for-sale securities*

Investments in debt and equity securities, being those held for non-trading purposes, are classified as available-for-sale securities. At each balance sheet date the fair value is remeasured, with any resultant gain or loss being recognised in other comprehensive income and accumulated separately in reserve and funds in the fair value reserve, except foreign exchange gains and losses in respect of monetary items such as debt securities which are recognised directly in the income and expenditure account. When these investments are derecognised, the cumulative gain or loss previously recognised directly in equity is recognised in the income and expenditure account.

When there is objective evidence that available-for-sale securities are impaired, the cumulative loss that had been recognised directly in reserve and funds is removed from reserve and funds and is recognised in the income and expenditure account. The amount of the cumulative loss that is recognised in the income and expenditure account is the difference between the acquisition cost (net of any principal repayment and amortisation) and current fair value, less any impairment loss on that asset previously recognised in the income.

Impairment losses recognised in the income and expenditure account in respect of available-for-sale equity securities are not reversed through the income and expenditure account. Any subsequent increase in the fair value of such assets is recognised in other comprehensive income.

Impairment losses in respect of available-for-sale debt securities are reversed if the subsequent increase in fair value can be objectively related to an event occurring after the impairment loss was recognised. Reversals of impairment losses in such circumstances are recognised in the income and expenditure account.



## **2 Significant accounting policies (continued)**

### **(g) Debtors, deposits and prepayments**

Debtors, deposits and prepayments are initially recognised at fair value and thereafter stated at amortised cost less impairment losses for bad and doubtful debts, except where the effect of discounting would be immaterial. In such cases, the receivables are stated at cost less impairment losses for bad and doubtful debts.

Impairment losses for bad and doubtful debts are recognised when there is objective evidence of impairment and are measured as the difference between the carrying amount of the financial asset and the estimated future cash flows, discounted where the effect of discounting is material. Objective evidence of impairment includes observable data that comes to the attention of the group about events that have an impact on the asset's estimated future cash flows such as significant financial difficulty of the debtor.

### **(h) Creditors and accrued charges**

Creditors and accrued charges are initially recognised at fair value and thereafter stated at amortised cost unless the effect of discounting would be immaterial, in which case they are stated at cost.

### **(i) Cash and cash equivalents**

Cash and cash equivalents comprise cash at bank and on hand, demand deposits with banks and other financial institutions, and short-term, highly liquid investments that are readily convertible into known amounts of cash and which are subject to an insignificant risk of changes in value, having been within three months of maturity at acquisition.

### **(j) Funds managed by the group**

#### **(i) Foundation fund**

Funds received are accounted for in the Foundation fund which is used exclusively for the establishment and use of the Academy at such time as the Academy shall direct.

#### **(ii) General fund**

The fund is used to finance the general operations of the group.

### **(k) Provisions and contingent liabilities**

Provisions are recognised for liabilities of uncertain timing or amount when the Academy or the group has a legal or constructive obligation arising as a result of a past event, it is probable that an outflow of economic benefits will be required to settle the obligation and a reliable estimate can be made. Where the time value of money is material, provisions are stated at the present value of the expenditure expected to settle the obligation.

## 2 Significant accounting policies (continued)

### (k) Provisions and contingent liabilities (continued)

Where it is not probable that an outflow of economic benefits will be required, or the amount cannot be estimated reliably, the obligation is disclosed as a contingent liability, unless the probability of outflow of economic benefits is remote. Possible obligations, whose existence will only be confirmed by the occurrence or non-occurrence of one or more future events are also disclosed as contingent liabilities unless the probability of outflow of economic benefits is remote.

### (l) Revenue recognition

Provided it is probable that the economic benefits will flow to the group and the revenue and costs, if applicable, can be measured reliably, revenue is recognised in the income and expenditure account as follows:

#### (i) Entrance fees and subscription fees

Entrance fees are recognised when the cash is received. Subscription fees are recognised on an accrual basis.

#### (ii) Donations, grants and contributions

Donations, grants and contributions are recognised when the group is reasonably assured that such amount will be received.

Grants that compensate the group for expenses incurred are recognised as revenue in the income and expenditure account on a systematic basis in the same periods in which the expenses are incurred.

#### (iii) Income from international congress and various functions

Income from international congress and various functions is recognised on an accrual basis.

#### (iv) Interest income

Interest income is recognised as it accrues using the effective interest method.

#### (v) Dividends

Dividend income from listed investments is recognised when the share price of the investment goes ex-dividend.

## **2 Significant accounting policies (continued)**

### **(m) Related parties**

For the purposes of these financial statements, a party is considered to be related to the group if:

- (i) the party has the ability, directly or indirectly through one or more intermediaries, to control the group or exercise significant influence over the group in making financial and operating policy decisions, or has joint control over the group;
- (ii) the group and the party are subject to common control;
- (iii) the party is a subsidiary, an associate of the group or a joint venture in which the group is a venturer;
- (iv) the party is a member of key management personnel of the group or the group's parent, or a close family member of such an individual, or is an entity under the control, joint control or significant influence of such individuals;
- (v) the party is a close family member of a party referred to in (i) or is an entity under the control, joint control or significant influence of such individuals; or
- (vi) the party is a post-employment benefit plan which is for the benefit of employees of the group or of any entity that is a related party of the group.

Close family members of an individual are those family members who may be expected to influence, or be influenced by, that individual in their dealings with the entity.

### **(n) Employee benefits**

- (i) Salaries, annual bonuses, paid annual leave, and the cost to the group of non-monetary benefits are accrued in the year in which the associated services are rendered by employees of the group. Where payment or settlement is deferred and the effect would be material, these amounts are stated at their present values.
- (ii) The group operates a defined contribution provident fund and a Mandatory Provident Fund scheme. Contributions are charged to the income and expenditure account as and when the contributions fall due.
- (iii) Termination benefits are recognised when, and only when, the group demonstrably commits itself to terminate employment or to provide benefits as a result of voluntary redundancy by having a detailed formal plan which is without realistic possibility of withdrawal.

### 3 Changes in accounting policies

The HKICPA has issued one new HKFRS, a number of amendments to HKFRSs and new Interpretations that are first effective for the current accounting period of the group and the Academy. Of these, HKAS 1 (revised 2007), *Presentation of financial statements* and Amendments to HKFRS 7, *Financial instruments: Disclosures - improving disclosures about financial instruments* are relevant to the group's financial statements.

As a result of the adoption of HKAS 1 (revised 2007), details of changes in reserve and funds during the period arising from transactions with reserve and funds holders in their capacity as such have been presented separately from all other income and expenditure in a revised consolidated statement of changes in reserve and funds. All other items of income and expenditure are presented in the consolidated income and expenditure account, if they are recognised as part of profit or loss for the period, or otherwise in a new primary statement, the consolidated statement of comprehensive income. Corresponding amounts have been restated to conform to the new presentation. This change in presentation has no effect on reported profit or loss, total income and expenditure or net assets for any period presented.

As a result of the adoption of the amendments to HKFRS 7, the financial statements include expanded disclosures in note 18(e) about the fair value measurement of the group's financial instruments, categorising these fair value measurements into a three-level fair value hierarchy according to the extent to which they are based on observable market data. The group has taken advantage of the transitional provisions set out in the amendments to HKFRS 7, under which comparative information for the newly required disclosures about the fair value measurements of financial instruments has not been provided.

### 4 Principal source of revenue

This represents the entrance fees and subscription fees received from fellows and members, and is analysed as follows:

	2009	2008
Entrance fees	\$ 5,412,000	\$ 5,642,000
Subscription fees	<u>12,713,668</u>	<u>6,141,469</u>
	<u>\$18,125,668</u>	<u>\$11,783,469</u>

**5 Other revenue**

	2009	2008
Advertising fee	\$ 427,150	\$ 356,590
Dividend income from listed securities	1,464,583	2,225,867
Income from specialist certification	301,300	232,400
Income from various functions	7,642,134	7,054,676
Interest income	2,257,756	3,152,333
Rental income	2,089,506	2,089,476
Government grants	-	1,692,828
Subscriptions - journal	1,639,378	1,590,733
Reversal of impairment losses on available-for-sale securities (note 10)	600,615	-
Others	<u>1,742,238</u>	<u>2,017,068</u>
	<u>\$18,164,660</u>	<u>\$20,411,971</u>

**6 Surplus/(deficit) for the year**

*Surplus/(deficit) for the year is arrived at after charging:*

	2009	2008
Auditor's remuneration	\$ 150,000	\$ 147,500
Loss on disposal of fixed assets	24,507	-
	<u>=====</u>	<u>=====</u>

**7 Taxation**

No provision has been made for Hong Kong Profits Tax as the group is exempted from taxation under the provision of section 88 of the Hong Kong Inland Revenue Ordinance.



**8 Fixed assets**

	<i>Computer equipment</i>	<i>Furniture and fixtures</i>	<i>Office equipment</i>	<i>Leasehold improvements</i>	<i>Property</i>	<i>Total</i>
<b>(a) The group</b>						
<b>Cost:</b>						
At 1 January 2008	\$3,589,780	\$ 5,075,780	\$11,640,620	\$ 6,887,047	\$ 3,335,832	\$30,529,059
Additions	<u>294,393</u>	<u>114,292</u>	<u>97,041</u>	<u>197,803</u>	<u>-</u>	<u>703,529</u>
At 31 December 2008	<u>\$3,884,173</u>	<u>\$ 5,190,072</u>	<u>\$11,737,661</u>	<u>\$ 7,084,850</u>	<u>\$ 3,335,832</u>	<u>\$31,232,588</u>
At 1 January 2009	\$3,884,173	\$ 5,190,072	\$11,737,661	\$ 7,084,850	\$ 3,335,832	\$31,232,588
Additions	151,178	335,914	115,240	1,538,683	-	2,141,015
Disposals	<u>(719,366)</u>	<u>(234,596)</u>	<u>(1,711,950)</u>	<u>-</u>	<u>-</u>	<u>(2,665,912)</u>
At 31 December 2009	<u>\$3,315,985</u>	<u>\$ 5,291,390</u>	<u>\$10,140,951</u>	<u>\$ 8,623,533</u>	<u>\$ 3,335,832</u>	<u>\$30,707,691</u>
<b>Accumulated depreciation:</b>						
At 1 January 2008	\$2,794,751	\$ 4,264,638	\$11,221,888	\$ 4,510,508	\$ 266,866	\$23,058,651
Charge for the year	<u>348,880</u>	<u>282,138</u>	<u>136,115</u>	<u>1,296,395</u>	<u>133,433</u>	<u>2,196,961</u>
At 31 December 2008	<u>\$3,143,631</u>	<u>\$ 4,546,776</u>	<u>\$11,358,003</u>	<u>\$ 5,806,903</u>	<u>\$ 400,299</u>	<u>\$25,255,612</u>
At 1 January 2009	\$3,143,631	\$ 4,546,776	\$11,358,003	\$ 5,806,903	\$ 400,299	\$25,255,612
Charge for the year	342,324	308,275	139,243	957,149	133,434	1,880,425
Written back on disposals	<u>(706,017)</u>	<u>(234,596)</u>	<u>(1,700,792)</u>	<u>-</u>	<u>-</u>	<u>(2,641,405)</u>
At 31 December 2009	<u>\$2,779,938</u>	<u>\$ 4,620,455</u>	<u>\$ 9,796,454</u>	<u>\$ 6,764,052</u>	<u>\$ 533,733</u>	<u>\$24,494,632</u>
<b>Net book value:</b>						
At 31 December 2009	<u>\$ 536,047</u>	<u>\$ 670,935</u>	<u>\$ 344,497</u>	<u>\$ 1,859,481</u>	<u>\$ 2,802,099</u>	<u>\$ 6,213,059</u>
At 31 December 2008	<u>\$ 740,542</u>	<u>\$ 643,296</u>	<u>\$ 379,658</u>	<u>\$ 1,277,947</u>	<u>\$ 2,935,533</u>	<u>\$ 5,976,976</u>

## 8 Fixed assets (continued)

	Computer equipment	Furniture and fixtures	Office equipment	Leasehold improvements	Property	Total
<b>(b) The Academy</b>						
<i>Cost:</i>						
At 1 January 2008	\$3,589,780	\$ 5,075,780	\$11,594,003	\$ 6,887,047	\$ 3,335,832	\$30,482,442
Additions	<u>294,393</u>	<u>114,292</u>	<u>97,041</u>	<u>197,803</u>	<u>-</u>	<u>703,529</u>
At 31 December 2008	<u>\$3,884,173</u>	<u>\$ 5,190,072</u>	<u>\$11,691,044</u>	<u>\$ 7,084,850</u>	<u>\$ 3,335,832</u>	<u>\$31,185,971</u>
At 1 January 2009	\$3,884,173	\$ 5,190,072	\$11,691,044	\$ 7,084,850	\$ 3,335,832	\$31,185,971
Additions	151,178	335,914	115,240	1,538,683	-	2,141,015
Disposals	<u>(719,366)</u>	<u>(234,596)</u>	<u>(1,711,950)</u>	<u>-</u>	<u>-</u>	<u>(2,665,912)</u>
At 31 December 2009	<u>\$3,315,985</u>	<u>\$ 5,291,390</u>	<u>\$10,094,334</u>	<u>\$ 8,623,533</u>	<u>\$ 3,335,832</u>	<u>\$30,661,074</u>
<i>Accumulated depreciation:</i>						
At 1 January 2008	\$2,794,751	\$ 4,264,638	\$11,175,271	\$ 4,510,508	\$ 266,866	\$23,012,034
Charge for the year	<u>348,880</u>	<u>282,138</u>	<u>136,115</u>	<u>1,296,395</u>	<u>133,433</u>	<u>2,196,961</u>
At 31 December 2008	<u>\$3,143,631</u>	<u>\$ 4,546,776</u>	<u>\$11,311,386</u>	<u>\$ 5,806,903</u>	<u>\$ 400,299</u>	<u>\$25,208,995</u>
At 1 January 2009	\$3,143,631	\$ 4,546,776	\$11,311,386	\$ 5,806,903	\$ 400,299	\$25,208,995
Charge for the year	342,324	308,275	139,243	957,149	133,434	1,880,425
Written back on disposals	<u>(706,017)</u>	<u>(234,596)</u>	<u>(1,700,792)</u>	<u>-</u>	<u>-</u>	<u>(2,641,405)</u>
At 31 December 2009	<u>\$2,779,938</u>	<u>\$ 4,620,455</u>	<u>\$ 9,749,837</u>	<u>\$ 6,764,052</u>	<u>\$ 533,733</u>	<u>\$24,448,015</u>
<i>Net book value:</i>						
At 31 December 2009	<u>\$ 536,047</u>	<u>\$ 670,935</u>	<u>\$ 344,497</u>	<u>\$ 1,859,481</u>	<u>\$ 2,802,099</u>	<u>\$ 6,213,059</u>
At 31 December 2008	<u>\$ 740,542</u>	<u>\$ 643,296</u>	<u>\$ 379,658</u>	<u>\$ 1,277,947</u>	<u>\$ 2,935,533</u>	<u>\$ 5,976,976</u>

## 8 Fixed assets (continued)

### (b) The Academy (continued)

The Academy entered into an agreement with the Hong Kong Special Administrative Region Government for grant by Private Treaty of Aberdeen Inland Lot No. 414 for a term of 50 years less 3 days with effect from 1 July 1997 and on which the headquarters of the Academy were built. The Academy is required to pay an amount equal to 3% of the rateable value per annum, which has been charged to the income and expenditure account.

## 9 Interest in a special purpose entity

Details of the special purpose entity are as follows:

<i>Name of the special purpose entity</i>	<i>Form of business structure</i>	<i>Place of incorporation and operation</i>	<i>Principal activity</i>	<i>Proportion of ownership interest held by Academy</i>
The Hong Kong Academy of Medicine Foundation Fund	Incorporated	Hong Kong	Fund raising and investment management	100%

## 10 Available-for-sale securities

	<i>The group</i>		<i>The Academy</i>	
	<i>2009</i>	<i>2008</i>	<i>2009</i>	<i>2008</i>
Equity securities:				
- Listed in Hong Kong	\$57,615,549	\$34,421,216	\$34,055,349	\$20,264,991
	-----	-----	-----	-----
Debt securities:				
- Listed in Hong Kong	\$21,914,699	\$20,690,830	\$ -	\$ -
- Listed outside Hong Kong	5,095,035	8,322,712	-	-
	-----	-----	-----	-----
	\$27,009,734	\$29,013,542	\$ -	\$ -
	-----	-----	-----	-----
	\$84,625,283	\$63,434,758	\$34,055,349	\$20,264,991
	=====	=====	=====	=====

## 10 Available-for-sale securities (continued)

As at 31 December 2008, the group's and the Academy's available-for-sale securities were individually determined to be impaired on the basis of a material decline in their fair value below cost and adverse changes in the market in which the investees operated which indicated that the cost of the group's investments in them may not be recovered. Impairment losses on these investments amounting to \$21,989,217 were recognised in the income and expenditure account in accordance with the policy set out in note 2(f). During 2009, the fair value of the debt securities has subsequently increased and therefore the impairment losses recognised in prior year amounting to \$600,615 was reversed to the income and expenditure account.

Included in debt securities is the following amount denominated in a currency other than the group's functional currency:

	2009	2008
United States Dollars	3,482,880	3,744,166
	=====	=====

## 11 Debtors, deposits and prepayments

	<i>The group</i>		<i>The Academy</i>	
	2009	2008	2009	2008
Deposits and prepayments	\$ 302,198	\$ 368,705	\$ 302,198	\$ 368,705
Other debtors	<u>2,357,835</u>	<u>2,371,045</u>	<u>1,778,944</u>	<u>1,826,539</u>
	<u>\$ 2,660,033</u>	<u>\$ 2,739,750</u>	<u>\$ 2,081,142</u>	<u>\$ 2,195,244</u>
	=====	=====	=====	=====

All of the debtors, deposits and prepayments are expected to be recovered within one year.

The group's credit policy is set out in note 18(a).

Included in debtors, deposits and prepayments is the following amount denominated in a currency other than the group's functional currency:

	2009	2008
United States Dollars	73,996	70,268
	=====	=====

**12 Cash and cash equivalents**

	<i>The group</i>		<i>The Academy</i>	
	<i>2009</i>	<i>2008</i>	<i>2009</i>	<i>2008</i>
Deposits with banks	\$39,421,814	\$36,222,684	\$14,664,698	\$14,635,475
Cash at bank and in hand	<u>23,517,992</u>	<u>19,661,193</u>	<u>17,216,645</u>	<u>14,051,071</u>
	<u>\$62,939,806</u>	<u>\$55,883,877</u>	<u>\$31,881,343</u>	<u>\$28,686,546</u>

Included in cash and cash equivalents is the following amount denominated in a currency other than the company's functional currency:

	<i>2009</i>	<i>2008</i>
United States Dollars	403,539	-
	<u>=====</u>	<u>=====</u>

**13 Creditors and accrued charges**

All of the creditors and accrued charges are expected to be settled within one year or are repayable on demand.

**14 Amount due from special purpose entity**

The amount due from The Hong Kong Academy of Medicine Foundation Fund, a special purpose entity, is unsecured, interest-free and repayable on demand.



## 15 Reserve and funds

### (a) *Movements in components of reserve and funds*

The reconciliation between the opening and closing balances of each component of the group's consolidated reserve and funds is set out in the consolidated statement of changes in reserve and funds. Details of the changes in the Academy's individual components of reserve and funds between the beginning and the end of the year are set out below:

*The Academy*

	<i>Fair value reserve</i>	<i>General fund</i>	<i>Total</i>
<b>Balance at 1 January 2008</b>	\$ 5,217,041	\$ 61,812,982	\$ 67,030,023
<b>Changes in equity for 2008:</b>			
Total comprehensive income for the year	(5,508,025)	(6,657,701)	(12,165,726)
<b>Balance at 31 December 2008 and 1 January 2009</b>	\$ (290,984)	\$ 55,155,281	\$ 54,864,297
<b>Changes in equity for 2009:</b>			
Total comprehensive income for the year	11,569,344	3,740,004	15,309,348
<b>Balance at 31 December 2009</b>	\$ 11,278,360	\$ 58,895,285	\$ 70,173,645

### (b) *Nature and purpose of reserve and funds*

Fair value reserve comprises the cumulative net change in the fair value of available-for-sale securities held at the balance sheet date and is dealt with in accordance with the accounting policy in note 2(f). Foundation fund comprises the transfer of fund from The Hong Kong Academy of Medicine Foundation Fund. General fund comprises the cumulative surplus of the Academy.

## 16 Capital management

The group defines “capital” as including all components of equity. On this basis the amount of capital employed at 31 December was \$152,329,619 (2008: \$125,730,474).

The group’s primary objectives when managing capital are to safeguard the group’s ability to continue as a going concern.

The group’s capital structure is regularly reviewed and managed. Adjustments are made to the capital structure in light of changes in economic conditions affecting the group, to the extent that these do not conflict with the Council’s fiduciary duties towards the group or the requirements of the Hong Kong Academy of Medicine Ordinance.

The group was not subject to externally imposed capital requirements in either the current or prior year.

## 17 Commitments

Capital commitments outstanding at 31 December 2009 not provided for in the financial statements were as follows:

	<i>The group</i>		<i>The Academy</i>	
	<i>2009</i>	<i>2008</i>	<i>2009</i>	<i>2008</i>
Contracted for	\$ 60,000	\$ 212,514	\$ 60,000	\$ 212,514
	=====	=====	=====	=====

## 18 Financial instruments

Exposure to credit, liquidity, interest rate and currency risks arises in the normal course of the group's business. These risks are limited by the group's financial management policies and practices described below.

### (a) Credit risk

The group's credit risk is primarily attributable to available-for-sale securities and cash deposits. Management has a credit policy in place and the exposures to these credit risks are monitored on an ongoing basis.

Investments in available-for-sale securities are normally only in liquid securities and with counterparties that have a credit rating equal to or better than the group. Given their high credit ratings, management does not expect any investment counterparty to fail to meet its obligations.

On 14 October 2008, the Government announced the use of the Exchange Fund to immediately guarantee repayment of all customer deposits held with authorised institutions in Hong Kong Special Administrative Region ("HKSAR") (which cover licensed banks in HKSAR, among others, and include HKSAR branches of overseas institutions) following the principles of the Deposit Protection Scheme, until the end of 2010. The bank balances of the group are kept in the said authorised institutions and are therefore protected under the said scheme.

The maximum exposure to credit risk is represented by the carrying amount of each financial asset in the balance sheet. The group does not provide any other guarantees which would expose the group to credit risk.

### (b) Liquidity risk

The group's policy is to regularly monitor current and expected liquidity requirements to ensure that it maintains sufficient reserves of cash and readily realisable marketable securities to meet its liquidity requirements in the short and longer term.

### (c) Interest rate risk

The group is exposed to interest rate risk only to the extent that it earns bank interest on cash and deposits.

The effective interest rates per annum relating to cash at bank and time deposits at the balance sheet date ranges from 0.01% to 0.35% (2008: 0.10% to 0.60%) for the group and 0.01% to 0.35% (2008: 0.01% to 0.60%) for the Academy respectively.

At 31 December 2009, it is estimated that a general increase of 100 basis points in interest rates, with all other variables held constant, would decrease the group's surplus for the year and general fund by approximately \$594,000 (2008: \$584,000). Other components of equity would not be affected (2008: \$Nil) by the changes in interest rates.

## 18 Financial instruments (continued)

### (c) Interest rate risk (continued)

The sensitivity analysis above has been determined assuming that the change in interest rates had occurred at the balance sheet date and had been applied to the exposure to interest rate risk for financial instruments in existence at that date. The 100 basis point increase represents management's assessment of a reasonably possible change in interest rates over the period until the next annual balance sheet date. The analysis is performed on the same basis for 2008.

### (d) Currency risk

The group is exposed to currency risk through purchases of debt securities and other debtors that are denominated in United States dollars ("USD"). As the Hong Kong dollar ("HKD") is pegged to the USD, the group does not expect any significant movements in the USD/HKD exchange rate.

### (e) Fair values

The carrying amounts of all financial instruments as at 31 December 2009 and 2008 approximated their fair values.

The following table presents the carrying value of financial instruments measured at fair value at the balance sheet date across the three levels of the fair value hierarchy defined in HKFRS 7, *Financial Instruments: Disclosures*, with the fair value of each financial instrument categorised in its entirety based on the lowest level of input that is significant to that fair value measurement. The levels are defined as follows:

- Level 1 (highest level): fair values measured using quoted prices (unadjusted) in active markets for identical financial instruments
- Level 2: fair values measured using quoted prices in active markets for similar financial instruments, or using valuation techniques in which all significant inputs are directly or indirectly based on observable market data
- Level 3 (lowest level): fair values measured using valuation techniques in which any significant input is not based on observable market data

At 31 December 2009, all financial instruments measured at fair value fall into level 1 of the fair value hierarchy described above.

**18 Financial instruments (continued)**

**(f) Other price risk**

The group's investments are subject to market price risk arising from uncertainties about future prices of the investments. The group's market price risk is managed through diversification of the investments.

The Council monitors the market price risk of the investments individually and estimated that a 5% increase/decrease in market prices of invested bond and equity securities at 31 December 2009, with all other variables held constant, would increase/decrease the group's net assets by \$1.7 million (2008: \$1.0 million).

**19 Possible impact of amendments, new standards and interpretations issued but not yet effective for the annual accounting year ended 31 December 2009**

Up to the date of issue of these financial statements, the HKICPA has issued a number of amendments, new standards and interpretations which are not yet effective for the accounting year ended 31 December 2009 and which have not been adopted in these financial statements.

The group is in the process of making an assessment of what the impact of these amendments, new standards and new interpretations is expected to be in the period of initial application. So far it has concluded that the adoption of them is unlikely to have a significant impact on the group's results of operations and financial position.



## Detailed consolidated income and expenditure account for the year ended 31 December 2009

(Expressed in Hong Kong dollars)

	2009	2008
<b>Principal source of revenue</b>		
Entrance fees	\$ 5,412,000	\$ 5,642,000
Subscription fees	<u>12,713,668</u>	<u>6,141,469</u>
	\$ 18,125,668	\$ 11,783,469
	-----	-----
<b>Other revenue</b>		
Advertising fee	\$ 427,150	\$ 356,590
Dividend income from listed securities	1,464,583	2,225,867
Income from specialist certification	301,300	232,400
Income from various functions	7,642,134	7,054,676
Interest income	2,257,756	3,152,333
Rental income	2,089,506	2,089,476
Government grants	-	1,692,828
Subscriptions - journal	1,639,378	1,590,733
Others	<u>2,342,853</u>	<u>2,017,068</u>
	\$ 18,164,660	\$ 20,411,971
	-----	-----
	\$ 36,290,328	\$ 32,195,440
	-----	-----
<b>Staff costs</b>	\$ (9,048,536)	\$ (8,338,617)
	-----	-----
<b>Depreciation</b>	\$ (1,880,425)	\$ (2,196,961)
	-----	-----

## Detailed consolidated income and expenditure account for the year ended 31 December 2009 (continued)

(Expressed in Hong Kong dollars)

	2009	2008
<b>Other operating expenses</b>		
Advertising expenses	\$ (9,000)	\$ (27,600)
Auditor's remuneration	(150,000)	(147,500)
Bad debt expense	(9,590)	-
Building management fee	(7,930,361)	(8,120,798)
Computer expenses	(228,626)	(228,528)
Dining room expenses	(772,208)	(877,524)
Food and beverage expenses	(3,011,900)	(2,925,125)
Loss on disposal of fixed assets	(24,507)	-
Other function expenses	(1,443,513)	(1,947,515)
Government rent and rates	(853,150)	(864,373)
Insurance	(176,148)	(160,480)
Investment management fee	(33,605)	(20,298)
Meeting expenses	(82,052)	(57,627)
Miscellaneous	(877,388)	(673,145)
Newsletter and journal production	(894,845)	(921,168)
Postage and delivery	(409,741)	(477,847)
Printing and stationery	(207,092)	(424,251)
Professional fees	(278,925)	(370,400)
Repairs and maintenance	(305,764)	(361,338)
Scholarship expenses	(176,892)	-
Telephone and fax	(70,205)	(63,900)
Travelling	(189,395)	(408,306)
	<u>\$ (18,134,907)</u>	<u>\$ (19,077,723)</u>
<b>Realised loss on disposal of available-for-sale securities</b>	<u>\$ (4,634,500)</u>	<u>\$ -</u>
<b>Impairment losses on available-for-sale securities</b>	<u>\$ -</u>	<u>\$ (21,989,217)</u>
<b>Surplus/(deficit) for the year</b>	<u><u>\$ 2,591,960</u></u>	<u><u>\$ (19,407,078)</u></u>

---

# HKAM Structure

---

(as of August 2010)

## ■ Council

57

President  
Vice-President (General Affairs)  
Vice-President (Education & Exams)  
Honorary Secretary  
Honorary Treasurer  
Editor

(College of)  
Anaesthesiologists  
Community Medicine  
Dental Surgeons  
Emergency Medicine  
Family Physicians  
Obstetricians & Gynaecologists  
Ophthalmologists  
Orthopaedic Surgeons  
Otorhinolaryngologists  
Paediatricians  
Pathologists  
Physicians  
Psychiatrists  
Radiologists  
Surgeons

### Officers

Prof. Raymond Liang 梁憲孫教授  
Dr. Donald Li 李國棟醫生  
Dr. C.T. Hung 熊志添醫生  
Dr. Louis Chow 周永昌醫生  
Dr. Stephen Foo 傅鑑蘇醫生  
Dr. Richard Kay 祁理治醫生

### Ex officio members

Prof. Michael Irwin 艾明高教授  
Dr. S.P. Mak 麥倩屏醫生  
Dr. Joseph Chan 陳祖貽醫生  
Dr. C.C. Lau 劉楚釗醫生  
Dr. Gene Tsoi 蔡惠宏醫生  
Prof. Hextan Ngan 顏婉嫦教授  
Dr. Clement Chan 陳偉能醫生  
Prof. L.K. Hung 熊良儉教授  
Dr. K.H. Ma 馬光漢醫生  
Prof. P.C. Ng 伍百祥教授  
Dr. Michael Suen 孫宏明醫生  
Prof. K.N. Lai 黎嘉能教授  
Dr. S.F. Hung 熊思方醫生  
Dr. C.K. Law 羅振基醫生  
Prof. C.K. Yeung 楊重光教授

### Elected members

Dr. C.B. Chow 周鎮邦醫生  
Prof. Cindy Lam 林露娟教授  
Dr. C.L. Law 羅致廉醫生  
Prof. William Wei 韋霖教授  
Dr. C.P. Wong 王春波醫生

---

Honorary Legal Advisors

Ms. Helen Chan 陳玉萍律師  
Mr. Jacob Tse 謝銳蓀律師  
Mr. Charles Chan 陳左澤大律師  
Prof. Huang Jie Fu 黃潔夫教授  
Ms. Isabella Wong 黃依倩小姐

Honorary Advisor

Honorary Consultant on China Affairs



### Appeals Committee

Chairman	:	Prof. John Leong 梁智仁教授	
Panel	:	Dr. David Fang 方津生醫生	Dr. K.H. Lo 羅國洪醫生
		Prof. P.C. Ho 何柏松教授	Dr. W.P. Mak 麥衛炳醫生
		Dr. S.P. Hui 許少萍醫生	Prof. C.Y. Yeung 楊執庸教授
		Dr. Lawrence Lai 賴福明醫生	Dr. Natalis Yuen 阮中鑾醫生
		Dr. Joseph Lee 李川軍醫生	

### CME Sub-Committee

Chairman	:	Dr. Gene Tsoi 蔡惠宏醫生	
Members	:	Dr. C.L. Au 區志立醫生	Prof. Cindy Lam 林露娟教授
		Dr. Stephen Foo 傅鑑蘇醫生	Prof. Joseph Lau 劉允怡教授
		Dr. Steven Ho 何耀強醫生	Dr. Ruby S.Y. Lee 李兆妍醫生
		Dr. C.T. Hung 熊志添醫生	Dr. T.C. Law 羅冬姿醫生
		Dr. S.F. Hung 熊思方醫生	

### Conference Committee

2010 Tripartite Congress Local Organising Committee

Chairman	:	Dr. Donald Li 李國棟醫生	
Members	:	Prof. Raymond Liang 梁憲孫教授	Dr. Richard Kay 祁理治醫生
		Prof. Grace Tang 鄧惠瓊教授	Dr. C.B. Chow 周振邦醫生
		Dr. Stephen Foo 傅鑑蘇醫生	Dr. Kathleen So 蘇碧嫻醫生
College Representatives:	:	Dr. W.M. Chan 陳偉民醫生	Prof. W.K. Leung 梁惠強醫生
(in Scientific Sub-Committee)	:	Dr. C.M. Ho 何超明醫生	Dr. Edmond Ma 馬紹鈞醫生
		Dr. H.F. Ho 何曉輝醫生	Dr. Roger Ng 吳文健醫生
		Dr. Philip Ho 何玉賢醫生	Dr. W.L. Poon 潘偉麟醫生
		Prof. Michael Irwin 艾高明教授	Dr. S.N. Wong 黃錫年醫生
		Prof. Y.L. Kwong 鄺沃林教授	Dr. John Woo 吳港生醫生
		Prof. T.P. Lam 林大邦教授	Dr. K.S. Yu 俞江山醫生
		Dr. W.C. Leung 梁永昌醫生	

### Education Committee

Chairman	:	Dr. C.T. Hung 熊志添醫生	
Members	:	Dr. C.W. Chan 陳志偉醫生	Dr. T.K. Lau 劉子建醫生
		Prof. Annie Cheung 張雅賢教授	Prof. Felice Lieh-Mak 麥列菲菲教授
		Dr. C.C. Chi 池中齊醫生	Dr. Albert C.H. Lit 列就雄醫生
		Dr. W.K. Ching 程偉權醫生	Prof. Edward C.M. Lo 盧展民
		Dr. Y.F. Chow 周雨發醫生	Dr. H.T. Luk 陸洪滔醫生
		Prof. Clive Stewart Cockram	Prof. N.G. Patil
		Dr. H. Fung 馮康醫生	Dr. Homer Tso 左偉國醫生
		Dr. Mary Kwong 鄺碧綠醫生	Dr. S.N. Wong 黃錫年醫生
		Dr. Cindy Lai 黎潔廉醫生	Dr. John Woo 吳港生醫生
		Dr. H.S. Lam 林漢城醫生	Dr. Loretta Yam 任燕珍醫生
		Prof. Linda Lam 林翠華教授	
Co-opted Members	:	Dr. Louis Chow 周永昌醫生	Prof. Raymond Liang 梁憲孫教授
CMECPD Associate	:	Dr. Raymond Chen 陳崇一醫生	Dr. Roch K.H. Lee 李炯康醫生
Directors:	:	Prof. L.K. Hung 熊良儉教授	Prof. Ronnie T.P. Poon 潘冬平教授
		Prof. Cindy L.K. Lam 林露娟教授	Dr. C.P. Wong 王春波醫生



**Editorial Board (Journal)**

Editor-in-chief	:	Dr. R. Kay 祁理治醫生	Dr. A.K.K. Chui 徐家強醫生
Senior Editors	:	Prof. P.T. Cheung 張璧濤教授 Prof. M.G. Irwin	Prof. I.T.S. Yu 余德新教授
Editors	:	Dr. K.L. Chan 陳廣亮醫生 Dr. K.S. Chan 陳健生醫生 Prof. H.L.Y. Chan 陳力元教授 Dr. A.O.O. Chan 陳安安醫生 Dr. C.B. Chow 周鎮邦醫生 Prof. W.B. Goggins Dr. W.K. Hung 熊維嘉醫生 Dr. A.K.H. Kwok 郭坤豪醫生 Dr. P.B.S. Lai 賴寶山醫生 Dr. E.K.F. Lam 林國輝醫生 Prof. S.T.S. Lam 林德深教授 Dr. W.Y. Lam 林永賢醫生 Dr. N.L.S. Lee 李禮舜醫生 Dr. D.W.H. Lee 李偉雄醫生 Prof. D.T.N. Leung 梁子昂教授 Prof. W.K. Leung 梁惠強教授	Dr. Janice Y.C. Lo 羅懿之醫生 Dr. H.H.F. Loong 龍浩鋒醫生 Dr. J.K.H. Luk 陸嘉熙醫生 Dr. J.K.F. Ng 吳國夫醫生 Prof. H.Y.S. Ngan 顏婉嫦教授 Dr. M.P. Pak 白威醫生 Dr. P.C. Tam 談寶鏞醫生 Prof. S.W. Tang 鄧兆華教授 Dr. W.Y.M. Tang 鄧旭明醫生 Prof. C.C.Y. Tham 譚智勇教授 Dr. P.C.Y. Tong 唐俊業醫生 Dr. T.W. Wong 黃大偉醫生 Prof. P.C.Y. Woo 胡釗逸教授 Dr. T.K. Yau 游子覺醫生 Dr. S.H. Yeung 楊世雄醫生
Executive Editors	:	Dr. M. Harris Cheng	Prof. C.R. Kumana

**International Editorial Advisory Board (Journal)**

Members	:	Prof. S. Arulkumaran Prof. R.C. Atkins Prof. P.A. Cameron Prof. Z.H. Chen Prof. J.A. Dickinson Prof. A.K. Dixon Prof. W.E. Fee, Jr Prof. S.S. Hu	Prof. S.P.F. Hughes Prof. A. Kleinman Prof. X.P. Luo Prof. J.M. Samet Prof. R. Schmelzeisen Prof. D.J. Weatherall Prof. H. Yang
---------	---	---	---

**Editorial Board (Newsletter)**

Editor	:	Dr. Richard Kay 祁理治醫生	
Members	:	Dr. Louis Chow 周永昌醫生 Dr. David Fang 方津生醫生	Dr. Y.L. Yu 余毓靈醫生 Mr. Elmer Wan 溫樹堂先生

**Finance and Investment Committee**

Chairman	:	Mr. M.B. Lee 李文彬先生	
Members	:	Dr. C.W. Chan 陳作耘醫生 Dr. David Fang 方津生醫生 Dr. Stephen Foo 傅鑑蘇醫生	Dr. Peter Lee 李仲賢醫生 Dr. Donald Li 李國棟醫生 Dr. Philip Wu 伍步謙博士

**House Committee**

Chairman	:	Dr. Louis Chow 周永昌醫生	
Members	:	Dr. C.W. Chan 陳作耘醫生 Dr. Stephen Foo 傅鑑蘇醫生	Prof. N.K. Leung 梁乃江教授 Prof. Stephen Wei 韋漢賢教授



### Medical Manpower Planning Committee

Chairman	:	Dr. Donald Li 李國棟醫生	
Members	:	Dr. Cecilia Cheon 張偉麗醫生	Prof. Y.L. Lau 劉宇隆教授
		Dr. Benson Cheung 張子安醫生	Dr. C.S. Li 李俊生醫生
		Dr. M.T. Cheung 張滿棠醫生	Dr. S.V. Lo 羅思偉醫生
		Dr. W.K. Ching 程偉權醫生	Prof. Edward Lo 盧展民教授
		Dr. Peter Choi 蔡浩強醫生	Dr. W.F. Ng 吳榮豐醫生
		Dr. Y.F. Chow 周雨發醫生	Mr. Patrick Nip 聶德權先生
		Dr. William Ho 何兆煒醫生	Prof. Timothy Rainer
		Dr. F.K. Ip 葉富強醫生	Dr. Gene Tsoi 蔡惠宏醫生
		Dr. Cindy Lai 黎潔廉醫生	Dr. John Woo 吳港生醫生
		Prof. Linda Lam 林翠華教授	

### Membership Committee

Chairman	:	Dr. Kathleen So 蘇碧嫻醫生	
Members	:	Prof. T.K. Chan 陳棟光教授	Prof. Y.L. Lau 劉宇隆教授
		Prof. L.K. Hung 熊良儉教授	Dr. Joseph Lee 李川軍醫生
		Prof. Joseph Lau 劉允怡教授	Dr. William Yung 容清華醫生

### Past Presidents Advisory Committee

Co-Convenors	:	Dr. C.H. Leong 梁智鴻醫生	Prof. Richard Yu 余宇康教授
Honorary Secretary	:	Dr. Donald Li 李國棟醫生	
Ex officio Member	:	Prof. Raymond Liang 梁憲孫教授	
Members	:	Past Presidents of the Academy and Colleges	

### Public Relations Committee

Chairman	:	Dr. C.L. Law 羅致廉醫生	
Members	:	Spokespersons of the Academy and Colleges	

### Publications Committee

Chairman	:	Dr. Richard Kay 祁理治醫生	
Members	:	Dr. James Chiu 趙承平醫生	Dr. T.W. Wong 黃大偉醫生
		Dr. David Fang 方津生醫生	Dr. Y.L. Yu 余毓靈醫生
		Dr. Stephen Foo 傅鑑蘇醫生	

### Steering Committee for the International Network for CME/CPD

Chairman	:	Dr. David Fang 方津生醫生	
Members	:	6 Office-bearers	

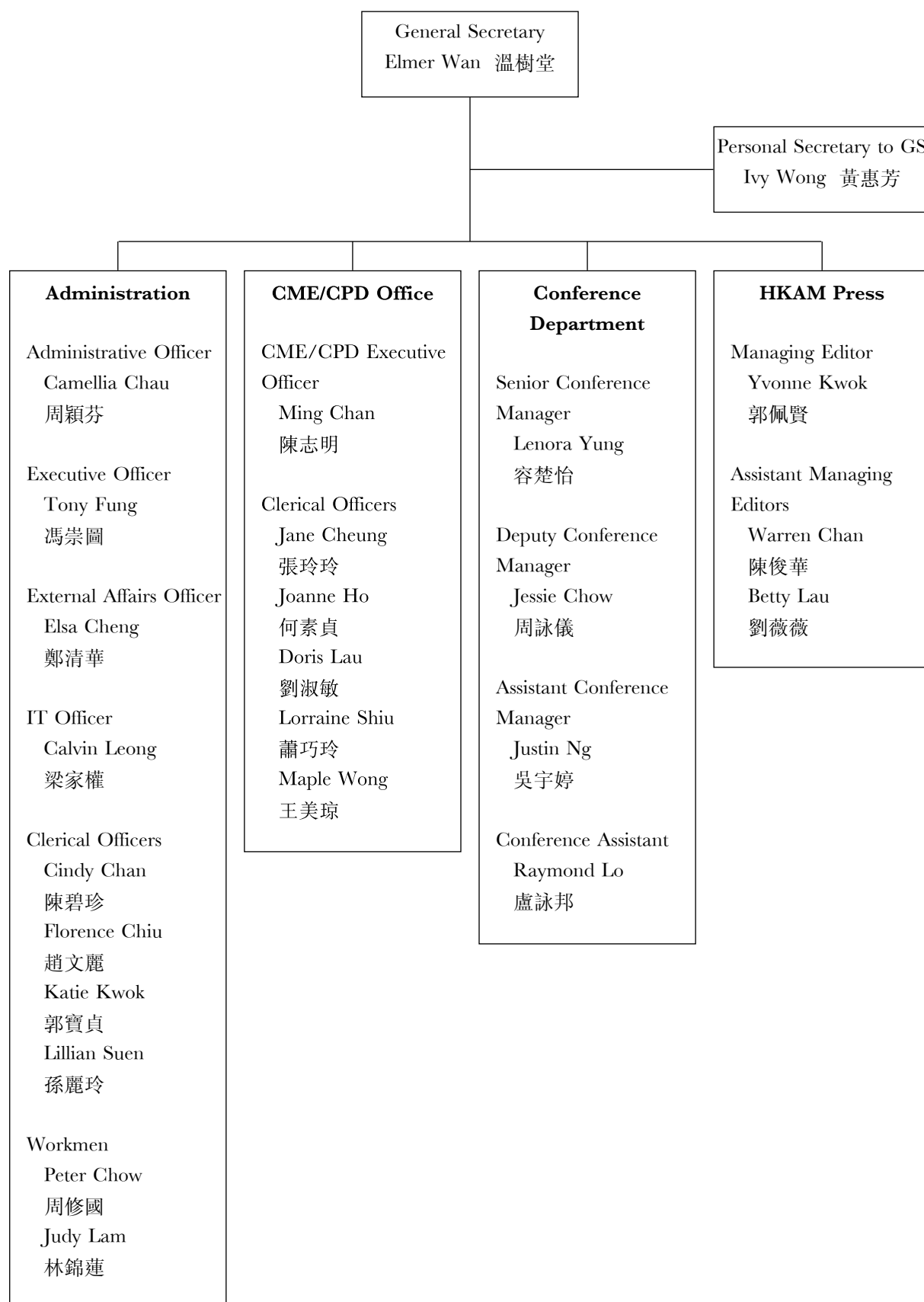
### Think Tank

Chairman	:	Prof. John Leong 梁智仁教授	
Members	:	Dr. Andrew Ip 葉傑權醫生	Dr. Edward Leung 梁萬福醫生
		Prof. Raymond Liang 梁憲孫教授	Prof. Jean Woo 胡令芳教授

### Training Scholarship Sub-Committee

Chairman	:	Prof. C.K. Yeung 楊重光教授	
Members	:	Dr. Alex K.H. Chan 陳國興醫生	Dr. C.T. Hung 熊志添醫生
		Dr. Y.F. Chow 周雨發醫生	Dr. W.K. Ngai 倪偉傑醫生
		Dr. Stephen Foo 傅鑑蘇醫生	Dr. John Ling 林友港醫生





# HKAM Representation

(as of August 2010)

Committee	Organisation	Representative
Medical Council	Medical Council of Hong Kong	Prof. Cindy Lam Dr. Donald Li
Education and Accreditation Committee	Medical Council of Hong Kong	Dr. C.T. Hung Dr. Ares Leung
Education and Accreditation Committee	Dental Council of Hong Kong	Dr. William Yung
Medical Faculties Visiting Team	Medical Council of Hong Kong	Dr. C.T. Hung
Panel of Assessors	Medical Council of Hong Kong	Dr. Fung Kai Bun Dr. Kathleen So
Working Group on Documentation of Cause of Death	Department of Health	Dr. Poon Wai Ming
Occupational Deafness Medical Council	Labour Department (Headquarters)	Dr. K.H. Ma Prof. Ignatius Yu
Editorial Board	Medical Journal of Chinese People's Liberation Army	Prof. Joseph Lau
Steering Committee on e-Health Record Sharing	Food and Health Bureau	Dr. Louis Chow Dr. Andrew Ip
Preparatory Committee on the Development of Specialist Training, Registration and Accreditation in Mainland China	Ministry of Health	Dr. C.W. Chan Dr. David Fang Dr. C.T. Hung Prof. Joseph Lau Dr. C.H. Leong Prof. John Leong Prof. Grace Tang Prof. William Wei
Planning Committee of the International CPD Liaison Initiative	Royal College of Physicians and Surgeons of Canada	Prof. Grace Tang

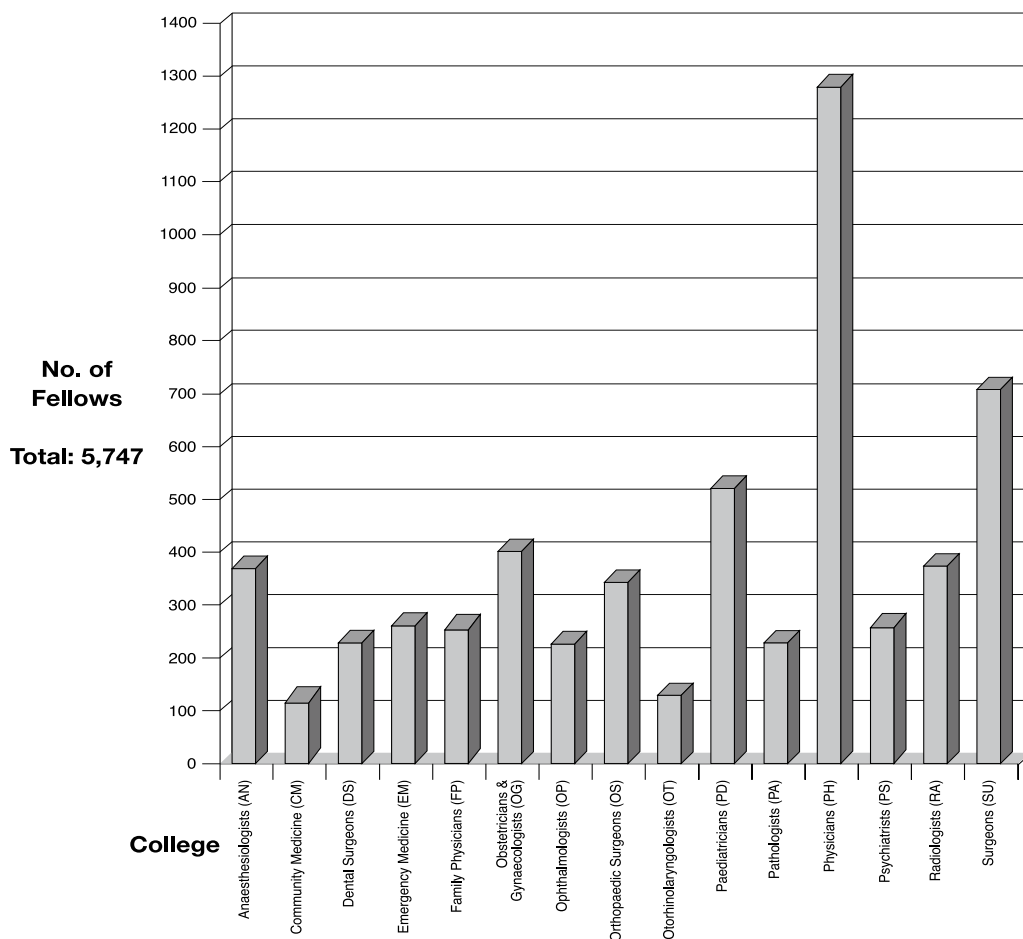
Overseas Scientific Meeting	Organiser	Representative
2 <sup>nd</sup> International Forum on CPD Accreditation (19-20 March 2010)	Royal College of Physicians and Surgeons of Canada / Royal Australasian College of Physicians	Prof. Raymond Liang Dr. C.T. Hung
World Congress of Internal Medicine 2010 in conjunction with the RACP Physicians Week (21-23 March 2010)	Royal Australasian College of Physicians	Prof. Raymond Liang
24 <sup>th</sup> National Congress of the Chinese Medical Association (23-25 April 2010)	Chinese Medical Association	Dr. Donald Li Dr. C.T. Hung

## Fellowship Statistics

(as of August 2010)

College	No. of Fellows
Anaesthesiologists (AN)	371
Community Medicine (CM)	123
Dental Surgeons (DS)	231
Emergency Medicine (EM)	265
Family Physicians (FP)	263
Obstetricians & Gynaecologists (OG)	402
Ophthalmologists (OP)	230
Orthopaedic Surgeons (OS)	346
Otorhinolaryngologists (OT)	131
Paediatricians (PD)	523
Pathologists (PA)	231
Physicians (PH)	1,282
Psychiatrists (PS)	263
Radiologists (RA)	376
Surgeons (SU)	710
<b>Total :</b>	<b>5,747</b>

(Note: There are 54 Academy Fellows who possess Fellowships in two or more different specialties.)



---

# ***New Fellows Admitted***

## ***at the Extraordinary General Meeting***

### ***On 18 June 2009***

---

*The following nominations were approved by Council on 18 June, 2009.*

#### **College of Anaesthesiologists (4 Fellows)**

*Chow Chee Yuen  
Jenkins, Caroline Ruth*

*So Mang Sze, Alpha*

*Wong Lai Yee, Belinda*

#### **College of Community Medicine (8 Fellows)**

*Choi Mei Yee  
Chui Wai May, Amy  
Ho Lei Ming, Raymond*

*Lam Chau Kuen, Yonnie  
Lee Chi Kei  
Ng Ping Sum, Sammy*

*So Shuk Kuen, Joanna  
Yeung Tze Kiu, Samuel*

#### **College of Dental Surgeons (6 Fellows)**

*Cheng Hung Wai, Ronald  
Ho Kam Yuen*

*Ho Wing Lam  
Ngai Kwai Shing*

*Wong Tak Ying  
Yiu Yin Ling*

#### **College of Family Physicians (15 Fellows)**

*Chan Yin Chiu  
Chung Chi Yan, Benny  
Kong Chun Yuk  
Kwong Siu Kei  
Lam Chi Yuen, Johnny*

*Lam Hiu Lam  
Lau Pui Ling  
Li Heung Wing  
Ng Ming Shing  
Ng Tsz Kin*

*Shek Hon Wing  
Tsui Hoi Yee  
Wong Chi Lung  
Yim Chi Ling  
Yu Pui Hang, David*

#### **College of Obstetricians and Gynaecologists (3 Fellows)**

*Ho Yau Bong, Winsom*

*Wong Sze Wai*

*Yang Tan Mei*

#### **College of Ophthalmologists (2 Fellows)**

*Chu Chung Yin*

*Gangwani, Rita Anil*

#### **College of Orthopaedic Surgeons (1 Fellow)**

*Lai, Raymond*

#### **College of Otorhinolaryngologists (4 Fellows)**

*Cheung Cheuk See, Amy Sonya  
Chow Siu Wah, Jennifer*

*To Shing Howe*

*Wong Wai Yeung*





**College of Paediatricians (5 Fellows)**

*Chan Sin Hang, June*  
*Chung Way Lueh*

*Fu Yu Ming*  
*Wan Hoi Shan*

*Wong Chin Pang*

**College of Pathologists (5 Fellows)**

*Chan Chi Wai, Rickjason*  
*Chiao Wing Fu*

*Lam Hoi Shiu, Bosco*  
*Liang Yu Shan*

*Wong Lap Gate, Michael*

**College of Physicians (18 Fellows)**

*Chan Ka Man*  
*Cheung Wing I*  
*Chiu Jong Hoh, John*  
*Choi Chun Hung*  
*Ip Fong Cheng*  
*Lam Chun Wai, Willis*

*Leung Man Chi*  
*Leung Yuk Wah*  
*Man Bik Ling*  
*Ng Ka Yan, Calvin*  
*Ng Wing Yiu*  
*Ngai Chun Li*

*Pang Hing Yan, Sandy*  
*Wong Chi Kwan*  
*Wong Chi Yuen*  
*Wong Wai Leung*  
*Wu Hiu Lam, Helen*  
*Yau Zi May, Susan*

**College of Psychiatrists (24 Fellows)**

*Chan Fong Yeung, Gloria*  
*Chan Fu*  
*Chan Lai Wah, Connie*  
*Chan Man Chak*  
*Chui Wing Ho, William*  
*Chung Pui Yin*  
*Fu Chi Kin, Jackie*  
*Hui Lung Kit*

*Leung Lam Ming, Jess*  
*Leung Wai Ching*  
*Liu Ching Yung, Amy*  
*Lok Yung Ching*  
*Ma Yin Ying*  
*Ng Kong Man*  
*Pao Sze Yuan, Ronnie*  
*Pau Lui*

*Sham Kwan Ho*  
*Sung Wing Kuen*  
*Tse Wing Yuen*  
*Wong Chung Hin, Willy*  
*Wong Hiu Mei*  
*Wong Ho Hon*  
*Wong Sze Man*  
*Wong Wai Yin, Elisabeth*

**College of Radiologists (13 Fellows)**

*Chan Kar Ki, Katherine*  
*Chan Siu Hong*  
*Chan Tin Sang, Augustine*  
*Chu Cheuk Man*  
*Fung Hon Shing*

*Hui Ping Kuen, John*  
*Hung Hiu Yee*  
*Kwok King Ming*  
*Leung Kwong Chuen*

*Tong Mei Po, Mabel*  
*Wong Siu Yu*  
*Wong Suet Wan*  
*Yeung Nga Yan*

**College of Surgeons (8 Fellows)**

*Chan Chi Yan, Albert*  
*Chau Hin, Lysander*  
*Ho Ka Lai, Cally*

*Ng Sze Hang, Calvin*  
*Tsang Hau Fung, Flora*  
*Wong Hung Leung*

*Wong Sin Hang*  
*Yu Cheong*

*Total number of Fellows admitted : 116*

# New Fellows Admitted

## at the Sixteenth Annual General Meeting

### On 18 December 2009

*The following nominations were approved by Council on 19 November, 2009.*

#### College of Anaesthesiologists (14 Fellows)

<i>Cheung Chuen Ho</i>	<i>Kam Hau Tsz</i>	<i>Ng Nga Lai, Alice</i>
<i>Chu Chung Yin</i>	<i>Khu Kin Fai</i>	<i>Poon Ching Mei, Clara</i>
<i>Chui Sze Wing</i>	<i>Kong Hang Sze, Amy</i>	<i>Tam Lee Ka</i>
<i>Chung Yu Fai</i>	<i>Koo Gar Yee, Emily</i>	<i>Yue Man Cheung, Stephen</i>
<i>Fu Yim Ting</i>	<i>Leung Wing Yan</i>	

#### College of Community Medicine (3 Fellows)

<i>Kung Kin Hang</i>	<i>Leung Yiu Hong</i>	<i>Sum Ming Yan</i>
----------------------	-----------------------	---------------------

#### College of Emergency Medicine (17 Fellows)

<i>Chan Chi Pang</i>	<i>Kwok Wing Hong, Willis</i>	<i>Wong Cheung</i>
<i>Chan Ka Moon</i>	<i>Lau Che Ying, Martin</i>	<i>Wong Mei Kam</i>
<i>Choi Kin Kei</i>	<i>Leung Yin Yee</i>	<i>Wong Pui Fai</i>
<i>Fung King Yuen</i>	<i>Ng Siu Pan</i>	<i>Yau Kin Pang</i>
<i>Ho Chung Hang</i>	<i>Tse Chui Ting</i>	<i>Young Bun</i>
<i>Kam Ka Lok</i>	<i>Wan Kuang An</i>	

#### College of Family Physicians (19 Fellows)

<i>Chan Yeuk Kei</i>	<i>Schlaikier, Brigitte Elisabeth</i>	<i>Wan King Tung, Peter</i>
<i>Cheung Kwok Leung</i>	<i>Sin Ming Chuen</i>	<i>Wan Kwong Yu</i>
<i>Cheung Sze Man</i>	<i>Sze Chung Fai</i>	<i>Wan Wing Fai</i>
<i>Li Yim Chu</i>	<i>Sze Hon Ho</i>	<i>Wang Hua Li</i>
<i>Loy Tien En, Grace</i>	<i>Tam Chung Yin, Janet</i>	<i>Wong Chi Sang</i>
<i>Ng Sze Wing, Catherine</i>	<i>Tam Sze Man</i>	<i>Wong Ying Fun</i>
<i>Ngai Ka Ho</i>		

#### College of Obstetricians and Gynaecologists (8 Fellows)

<i>Chan So Ching, Sarah</i>	<i>Lam Kwan, Diana</i>	<i>Wong Wai Yee</i>
<i>Cheung Yau Kar, Rachel</i>	<i>Lam Wai Kwan</i>	<i>Yeung Wing Yee, Tracy</i>
<i>Hung Wing Yan</i>	<i>Wong Sze Man</i>	

#### College of Ophthalmologists (12 Fellows)

<i>Baig, Nafees Begum</i>	<i>Li Chi Lai</i>	<i>Tai Ka Fat</i>
<i>Hui Yung Lam</i>	<i>Lo Chi Fung, Ernie</i>	<i>Tam Mang Kwan, Patrick</i>
<i>Lau Hing Wai</i>	<i>Mohamed, Shaheeda</i>	<i>Tang Wai Ho, Emily</i>
<i>Lee Ka Yau</i>	<i>Ngai Wing Sang</i>	<i>Wong Lee</i>



**College of Orthopaedic Surgeons (5 Fellows)**

*Chan Ping Keung*  
*Chen Chi Kin*

*Cheng Pui Lam*  
*Wan Siu Ho*

*Wong Kwun Hung, Kevin*

**College of Otorhinolaryngologists (1 Fellow)**

*Chow Man Wai*

**College of Paediatricians (11 Fellows)**

*Chan, Bosco*  
*Chen Hay Son, Robin*  
*Chik Kar Ki*  
*Chow Chin Pang*

*Fung Tsui Hang, Sharon*  
*Koh, Carline*  
*Lee Pui Wah, Pamela*  
*Lo Pui Wan, Henny*

*Luk Ho Ming*  
*Ting Yan Wing, Daniel*  
*Wong Man Yee*

**College of Pathologists (2 Fellows)**

*Tang Siu Fai*

*Yiu Kwan Ho*

**College of Physicians (36 Fellows)**

*But Yiu Kuen, David*  
*Chan Hay Nun*  
*Chan Hiu Fai*  
*Chan Ka Chun, Alan*  
*Chan Ka Hing, Jacky*  
*Chan Kit*  
*Chan Leung Kwai*  
*Chan Shuk Fan*  
*Chan Siu Kim*  
*Chen, Cynthia*  
*Cheung, Chun Yu*  
*Cheung Shing Him*

*Cheung Wing Lin, Kent*  
*Chiu Lai Shan*  
*Chung Ho Yin*  
*Fan Tam Ting*  
*Hau Kai Ching*  
*Ho Ling Yin*  
*Ho Tsz Ling*  
*Hsu Shing Jih, Axel*  
*Khemlani, Mansha Hari*  
*Ko Kwok Chun, Jason*  
*Kwan Wai Mei, May*  
*Kwok Lai Wa*

*Lam Ka Man*  
*Lau Chi Pan*  
*Ma Tin Wei, Ada*  
*Ng So Shan*  
*Ong Ho Yun*  
*Shan Hok Shing, Edwin*  
*Sze-to Ching Ho*  
*Tang Wai Ming*  
*Tung Hon Man, Alvin*  
*Wong Chun Kwan, Bonnie*  
*Yeung Wai Tak, Alwin*  
*Yu Ka Lung, Carrel*

**College of Psychiatrists (10 Fellows)**

*Chang Wing Chung*  
*Choi, Patricia Ellen*  
*Chow Po Ling, Paulina*  
*Hung Bing Kei, Gabriel*

*Leung Shuk Yan, Joey*  
*Leung Tak Yu, Grace*  
*Li Ching Kwok*

*Poon Kam Shan*  
*Tung Fu Yin*  
*Yu Hoi Shuen, Zoe*

**College of Surgeons (17 Fellows)**

*Chan Shun*  
*Chan Tai Leung, Daniel*  
*Cheung Sing Tak*  
*Chu Tin Yu*  
*Law Sze Hong*  
*Lui Yuen Ching*

*Mark Hor Kee, Bonita*  
*Ng, Lily*  
*Ngai Ho Yin*  
*Rocha, Barnabe Antonio*  
*Tam Tak Lap, Derek*  
*Tsang Kwok Ying*

*Tse Yat Hang*  
*Wong Chun Wing*  
*Wong Siu Wang*  
*Yeung Ying Fune*  
*Yuen Ka Ye, Kenny*

*Total number of Fellows admitted : 155*









## **HONG KONG ACADEMY OF MEDICINE**

10/F, HKAM Jockey Club Building

99 Wong Chuk Hang Road

Tel: (852) 2871 8888 Fax: (852) 2505 5577

Email: [hkam@hkam.org.hk](mailto:hkam@hkam.org.hk)

Website: <http://www.hkam.org.hk/>