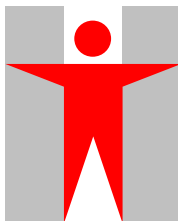


香港特別行政區政府
衛生署
基層醫療統籌處
香港美利道2號
美利道多層停車場大廈8樓



PRIMARY CARE OFFICE
DEPARTMENT OF HEALTH
THE GOVERNMENT OF THE HONG KONG
SPECIAL ADMINISTRATIVE REGION
8/F, MURRAY ROAD MULTI-STOREY CARPARK BUILDING,
2 MURRAY ROAD, HONG KONG

本署檔號 OUR REF.: DH/PC/14/5/5
來函檔號 YOUR REF.:
電話 TEL.: 3576 3658
圖文傳真 FAX.: 3583 4549

31 December 2010

Dear Doctors/Dentists,

Invitation for Enrolment in the Primary Care Directory

I write to invite all registered doctors and dentists practising in Hong Kong to enrol in the Primary Care Directory, which will facilitate the public to find their own family doctors and dentists starting March 2011.

Primary Care

Primary care is the first point of contact for individuals and families in a continuing healthcare process. The Working Group on Primary Care under the Health and Medical Development Advisory Committee was reconvened in October 2008 to advise on strategic directions for the development of primary care in Hong Kong. The benefits of good primary care as well as the major strategies and pathways of action which help deliver high quality primary care in Hong Kong are set out in the Primary Care Development Strategy Document (the “Strategy Document”) published by the Food and Health Bureau (FHB) in late December 2010, available at http://www.fhb.gov.hk/download/press_and_publications/otherinfo/101231_primary_care/e_strategy_doc.pdf. As stated in the Strategy Document, the main areas of work include the development of primary care conceptual models and reference frameworks, and the setting up of a Primary Care Directory, etc. So far, two reference frameworks for diabetes and hypertension care for adults in primary care settings have been developed. The reference frameworks will be promulgated to the healthcare professionals and the public very soon.

The Primary Care Directory

The Primary Care Directory, which is a web-based directory containing

We are committed to providing quality client-oriented service

personal and practice-based information about different primary care providers to facilitate the public to search for their own primary care providers, is now available for enrolment by doctors and dentists. In addition, a list of General Out-patient Clinics and Family Medicine Clinics of the Hospital Authority is also available. Detailed information on the Primary Care Directory is set out at **Annex 1** for reference. You may also visit our website at <https://www.pcdirectory.gov.hk> for more information.

Enrolment

Registered doctors and dentists with self-declared commitment to the provision of directly accessible, comprehensive, continuing and co-ordinated person-centred primary care services are eligible for enrolment, irrespective of their specialties or years of experience of practices. To enrol, you can assess the Directory on-line at <https://www.pcdirectory.gov.hk> by following the procedures at **Annex 2**.

For doctors/dentists in one of the following categories, we have offered you another choice to enrol in the Directory –

- (a) Continuing Medical Education (CME)/Continuing Professional Development (CPD)-certified doctors or dentists;
- (b) medical or dental specialists; or
- (c) enrollees of the Health Care Voucher Scheme (HCVS)/Elderly Vaccination Subsidy Scheme (EVSS)/Childhood Influenza Vaccination Subsidy Scheme (CIVSS).

This will save the efforts to input relevant information readily available from the Medical Council of Hong Kong, the Dental Council of Hong Kong, the Health Care Voucher Unit and/or the Vaccination Office of the Department of Health. Doctors/dentists in the above categories who would like to enrol by means of the simplified procedures summarised at **Annex 3** are required to give consent, by returning to us the completed reply slip at **Annex 4 by fax or by post** on or before **31 January 2011**, to enable us to obtain your information from the aforesaid organisations.

Doctors working in the General Out-patient Clinics and Family Medicine Clinics of the Hospital Authority can also enrol in the Directory voluntarily.

Briefing sessions

We are going to organise two identical two-hour briefing sessions titled “An Overview of Primary Care Development in Hong Kong” in late January 2011, which attract CME/CPD points. A tentative programme is at **Annex 5**. If you would like to know more about the Directory and the primary care development in Hong Kong, please return to us the completed reply slip at Annex 5 **on or before 14 January 2011**.

Enquiries

For enquiries of the Primary Care Directory, please contact the Primary Care Office at 3576 3658 or email to pco@dh.gov.hk.

We look forward to your on-going support.

Yours faithfully,



(Dr Amy PY CHIU)
for Director of Health

Primary Care Directory of Hong Kong

Primary care is the first point of contact for individuals and families in a continuing healthcare process. The importance of primary care has been highlighted by the World Health Organization more than 30 years ago. The Working Group on Primary Care under the Health and Medical Development Advisory Committee was reconvened in October 2008 to advise on strategic directions for the development of primary care in Hong Kong. The “Task Force on Primary Care Directory” with members comprising representatives from different healthcare professionals has been set up under the Working Group on Primary Care to oversee the development of the Primary Care Directory. The Directory will provide information so that the public can choose providers who are suitable for them. It also facilitates the co-ordination of multi-disciplinary teams to provide more comprehensive services and serves as a platform to support professional development and quality care.

Objectives of establishing the Primary Care Directory

2. The establishment of the Directory aims to –
 - (a) provide the public and healthcare service providers an easily accessible electronic database containing practice-based information of primary care professionals of various disciplines in the community;
 - (b) foster partnership between individuals and primary care practitioners as health co-ordinators; and
 - (c) facilitate the co-ordination among different primary care providers functioning as multi-disciplinary teams.

Professionals to be included in the Directory

3. The Directory will include western medicine doctors (doctors), dentists, Chinese medicine practitioners, nurses and allied health professionals and other healthcare service providers in the community.
4. Taking into consideration the existing scope of practice and maturity for development, the Directory is being developed in phases, starting with the sub-directories of doctors and dentists. Sub-directories for other primary care professionals will be developed based on similar principles for the sub-directories of doctors and dentists, with appropriate modifications where necessary.

Enrolment of registered doctors and dentists

5. Registered doctors and dentists with self-declared commitment to the provision of directly accessible, comprehensive, continuing and co-ordinated person-centred primary care services are eligible for enrolment in the Directory, irrespective of their specialties or years of experience of practices. Upon enrolment, both personal and practice-based information will be collected.

6. Enrolment can be made via the Directory website at <https://www.pcdirectory.gov.hk>. Please refer to the detailed enrolment procedures set out at Annex 2. Upon on-line enrolment, a confirmation e-mail will be sent to the applicant doctor/dentist concerned. The applicant is required to submit a copy of the Hong Kong Identity Card (HKID) to the Primary Care Office by fax or by post within one week for verification of information and further processing. Successful applicant will receive another e-mail with account activation link within four weeks upon submission of the copy of the HKID card.

7. For a Continuing Medical Education (CME)/Continuing Professional Development (CPD)-certified doctor or dentist, a medical or dental specialist and an enrollee of the Health Care Voucher Scheme (HCVS)/Elderly Vaccination Subsidy Scheme (EVSS)/Childhood Influenza Vaccination Subsidy Scheme (CIVSS) who would like to enrol through the simplified procedures at Annex 3, they are required to submit their consent form to the Primary Care Office by fax or by post on or before 31 January 2011.

8. As a list of General Out-patient Clinics and Family Medicine Clinics of the Hospital Authority will be provided in the Directory, doctors working in these clinics can also enrol to the Directory voluntarily.

Information to be included in the Directory

9. Upon enrolment, the applicant doctor/dentist will be asked to provide the following information at his/her own choice, such as:

- (a) Personal particulars
name, gender, qualifications, CME/CPD status
- (b) Practice-based information
address, contact details (telephone and fax number, e-mail address),
opening hours, payment methods, basic consultation fees, list of services

provided, participation in Government Primary Care Enhancement Programmes.

10. When the Directory is officially launched in end March 2011, the public can use the search function to find the doctors/dentists who suit their own needs. Examples of information displayed to the public are shown in the sample screen shot below –

The screenshot shows a web browser window titled "Primary Care Directory - Windows Internet Explorer". The address bar shows "https://192.168.99.164/PCD_UAT/adsearch.asp". The page features a "Quick Search" sidebar on the left with dropdown menus for Name, Gender, Primary Care Provider, District, Opening Hours, Day, and Time Slot, along with "Search" and "Reset" buttons. The main content area displays the profile of "CHAN, TAI MAN".

CHAN, TAI MAN

Gender: Male Type of Practice: Private
 Type of Primary Care Provider: Doctor Mobile: 12345678
 Medical Council of Hong Kong Registration Number: M12345 Pager: 87654321
 Medical Council of Hong Kong Specialist Registration Number: S01-1234

Qualification:

- Bachelor of Medicine and Bachelor of Surgery of the Chinese University of Hong Kong / MBChB (CUHK) (2003)
- Fellow of the Hong Kong Academy of Medicine (Family Medicine) / FHKAM (Family Medicine) (2009)
- Specialist In Family Medicine

Affiliated Private Hospital with Admission Right: Canossa Hospital, Evangel Hospital

Practice Address 1

Apple Building, Kwun Tong

Telephone: 56781234
 Emergency Contact Number: 43218765
 Fax: -
 Opening Hours: Monday - Friday (09:00 - 13:00), Monday - Friday (15:00 - 18:00)
 The clinic will open on the following holiday:
 The first weekday after Christmas Day (27/12/2010 14:30 - 19:00)

Primary Care Team Members – Practise-based: Dentist
 Primary Care Team Members – Directly Accessible, Not in the Same Practice Address: Occupational Therapist, Physiotherapist

Government Primary Care Programme Participated: [Elderly Vaccination Subsidy Scheme \(EVSS\)](#), [Health Care Voucher Scheme \(HCVS\)](#)

Language / Dialect Spoken: Cantonese, English

Basic Consultation Fee: \$200 - \$300 (with 3 day(s) of medicine included)
 Payment Method: Cash, EPS
 Please check with the service provider on the insurance arrangement and payment details.

List of Services Provided: -

The above information is for reference only, please contact the doctor for details.
 Date of Last Update : 20/12/2010

Disclaimer | Copyright Notice | Privacy Policy | Maintenance | Contact Us

Future enhancement in the Directory

11. The Directory will be further enhanced in subsequent phases, e.g. personal photo could be added, an on-line map showing practice address will be available, the Directory will be linked to the electronic platforms for various Government subsidised healthcare schemes.

Maintenance and delisting criteria

12. Maintenance requirements are set to promote and maintain the quality of

services provided by doctors and dentists listed in the Directory. In case the doctor or dentist ceases his/her practice or he/she could not fulfil the maintenance requirements, he/she may be delisted from the Directory.

Conditions for maintenance of listing at the initial stage

13. The enrollee –
- (a) shall continuously provide directly accessible, comprehensive, continuing and co-ordinated person-centred primary care services; and
 - (b) is required to obtain certification of CME for doctor by the Medical Council of Hong Kong or the Hong Kong Academy of Medicine; or CPD for dentists by the Dental Council of Hong Kong or the Hong Kong Academy of Medicine.

Conditions for delisting from the Directory at the initial stage

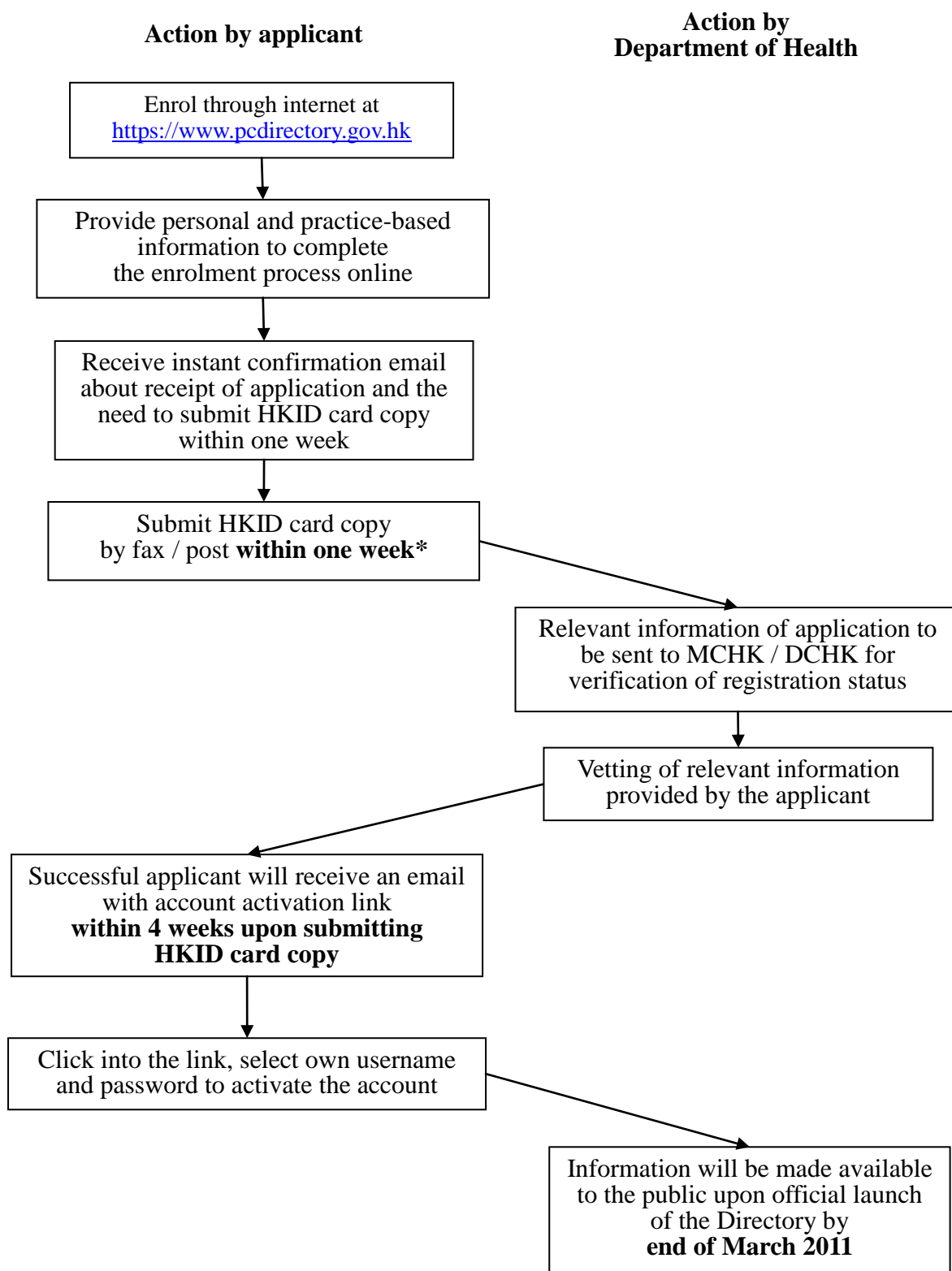
14. If the enrollee –
- (a) voluntarily withdraws from the Directory;
 - (b) ceases to be a registered doctor or dentist; or
 - (c) fails to meet the requirement for remaining in the Directory.

Future requirements

15. To facilitate the improvement in quality and standard of primary care, the entry, maintenance and delisting requirements will be reviewed *after the initial stage*, and the corresponding road-map for professional training requirements will be developed with professionals and academia.

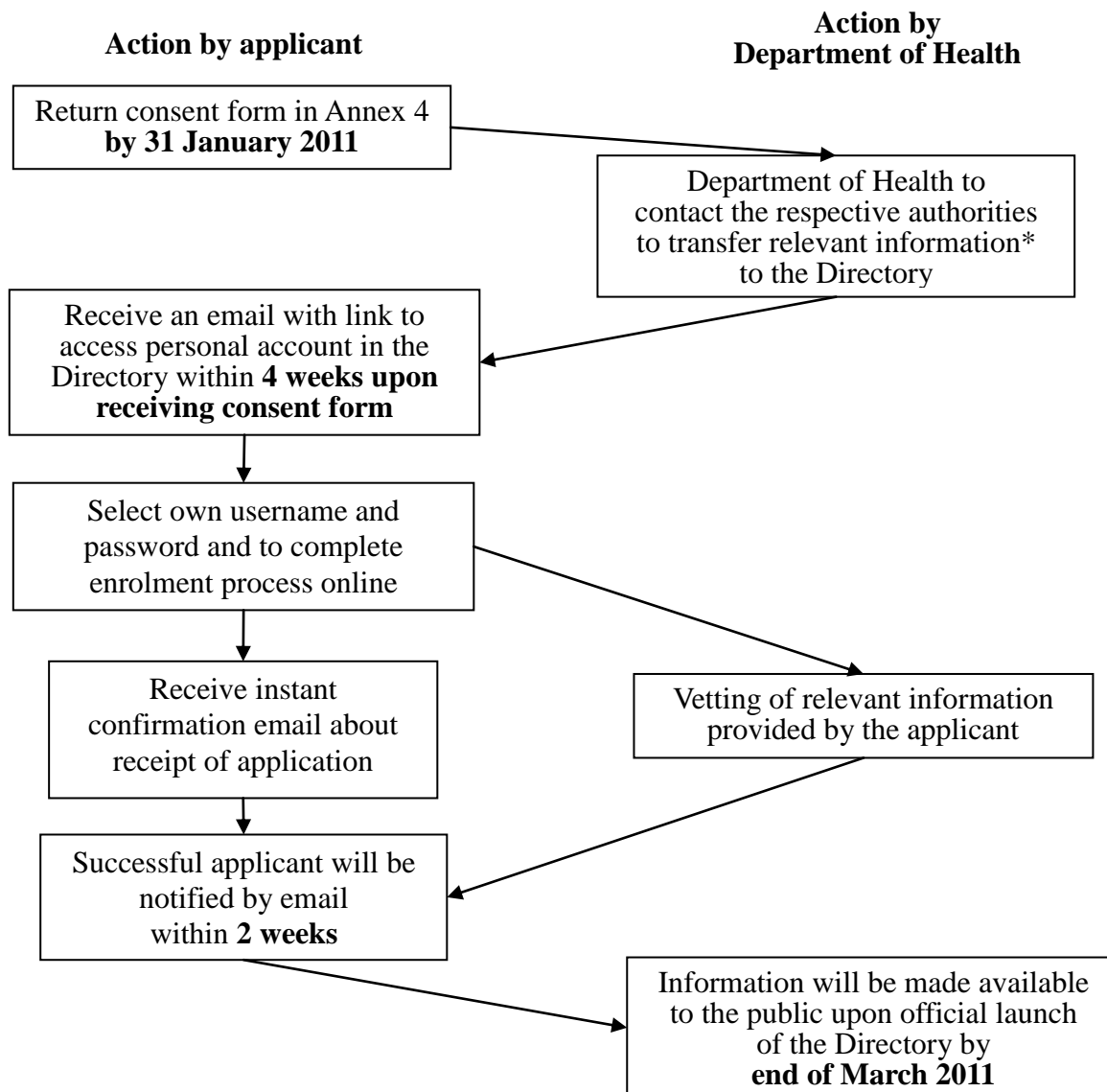
Resources about primary care and the Directory

16. A leaflet on Primary Care and Primary Care Directory has been prepared for primary care providers and is available under “Useful Primary Care Resources” of the Primary Care Directory website (<https://www.pcdirectory.gov.hk>).

Online Enrolment in the Primary Care Directory

* Fax (3583 4549), or post to the Primary Care Office, Department of Health, 8/F, Murray Road Multi-Storey Carpark Building, 2 Murray Road, Hong Kong

Simplified Enrolment for (1) CME/CPD-certified doctors or dentists; (2) medical or dental specialists; or (3) enrollees of the Health Care Voucher Scheme (HCVS)/Elderly Vaccination Subsidy Scheme (EVSS)/Childhood Influenza Vaccination Subsidy Scheme (CIVSS) to the Directory



*(i) For (1) CME/CPD-certified doctors or dentists, or (2) medical or dental specialists, the following information will be transferred:

1. Name
2. HKID number
3. MCHK/DCHK Registration number and/or Specialist Registration number
4. CME/CPD status

(ii) For (3) enrollees of HCVS/ EVSS/ CIVSS, the following information will be transferred:

1. Name
2. HKID number
3. MCHK/DCHK Registration number and/or Specialist Registration number
4. CME/CPD status
5. Email address
6. Practice address and telephone number of practice address

Reply Slip – Simplified Enrolment in the Primary Care Directory**Please return the completed reply slip on or before 31 January 2011****by fax (3583 4549) or post to the****Primary Care Office, Department of Health,****8/F, Murray Road Multi-Storey Carpark Building, 2 Murray Road, Hong Kong**

To : Primary Care Office, Department of Health

I hereby give consent to the Primary Care Office of the Department of Health to transfer my information (as stated in the following table) from the Medical Council of Hong Kong (MCHK) or Dental Council of Hong Kong (DCHK) and/or the Healthcare Voucher Unit and/or the Vaccination Office of the Department of Health to my personal account in the Primary Care Directory and for the purpose set out in the Notes on Use of Personal Data in the Appendix. I have read this consent carefully and fully understood my obligations and liability under this consent.

Table: Information to be obtained in simplified enrolment in the Primary Care Directory

I am an enrollee of:- <input type="checkbox"/> Health Care Voucher Scheme (HCVS) <input type="checkbox"/> Elderly Vaccination Subsidy Scheme (EVSS) <input type="checkbox"/> Childhood Influenza Vaccination Subsidy Scheme (CIVSS)	Information to be transferred to the Directory: 1. Name 2. HKID number 3. MCHK/DCHK Registration number and/or Specialist Registration number 4. CME/CPD status* 5. Email address 6. Practice address and telephone number of practice address
<input type="checkbox"/> I am a CME/CPD-certified doctor/dentist; or <input type="checkbox"/> I am a medical or dental specialist Please provide your email address to receive the link to access your personal account: _____	Information to be transferred to the Directory: 1. Name 2. HKID number 3. MCHK/DCHK Registration number and/or Specialist Registration number 4. CME/CPD status*

Please check the ☐ where appropriate.

You will receive an email with link to access your personal account within four weeks upon receipt of this completed reply slip.

Name in Block Letter : _____
(as shown in the Register of MCHK/ DCHK)
MCHK/DCHK Registration No. : _____
Contact Telephone No. : _____
Signature : _____
Date : _____

***Depending on the type of primary care provider and the CME/CPD status, the following information will be included in the personal account:**

For non-specialist doctors: CME certified valid up to DDMMYYYY (from 31/12/2010 onwards)

For non-specialist dentists: CPD certified valid up to 31/12/2010

For medical and dental specialists: has fulfilled CME/CPD requirement of the Hong Kong Academy of Medicine from 1/1/2005 to 31/12/2007

Notes on Use of Personal Data

Purpose of Collection

1. The personal data provided by the applicant will be used by the Department of Health, The Government of the Hong Kong Special Administrative Region for the following purposes:
 - (a) for processing the application for enrolment in the Directory and the administration and monitoring of the Directory;
 - (b) for disclosing relevant information in the Directory to the public and primary care practitioners; and
 - (c) for report, statistical and research purposes.
2. The provision of personal data is voluntary. If you do not provide sufficient information, we may not be able to consider your eligibility for enrolment in the Directory and may not process your application.

Classes of Transferees

3. The personal data provided by the applicant may be disclosed to –
 - (i) other Government bureaux/departments and parties outside the Government which are relevant to the application for the purposes stated in paragraph 1(a) and (c) above;
 - (ii) the public for the purpose stated in paragraph 1(b) above if required.

Access to Personal Data

4. The applicant has the right to request access to or correction of the personal data provided in accordance with the provisions of the Personal Data (Privacy) Ordinance (Cap 486). Such requests and enquiries concerning the personal data provided should be addressed to :

Executive Officer
Primary Care Office
Department of Health
8/F Murray Road Multi-Storey Carpark Building
2 Murray Road
Hong Kong
Telephone number: 3576 3432
Fax number: 3583 4549
Email Address: pco@dh.gov.hk

Reply Slip – Briefing Sessions on the
“Overview of Primary Care Development in Hong Kong”

Please return the completed reply slip

by fax (3583 4549) or post to the

Primary Care Office, Department of Health,

8/F, Murray Road Multi-Storey Carpark Building, 2 Murray Road, Hong Kong

To : Primary Care Office, Department of Health

I would like to attend the following briefing session:-

<input type="checkbox"/> 1 st Session		<input type="checkbox"/> 2 nd Session	
Date :	19 January 2011 (Wednesday)	Date :	21 January 2011 (Friday)
Time	1:30p.m. – 3:30p.m.	Time	1:30p.m. – 3:30p.m.
Venue :	Recital Hall, City Hall, 8/F, City Hall High Block, 5 Edinburgh Place, Central, Hong Kong	Venue :	Lecture Theatre, Centre for Health Protection, Department of Health, Argyle Street, Kowloon

Please put a “✓” inside the box to indicate your preference.

*We shall inform you through email / fax **only if the session selected is full.***

Table: Tentative Programme

Time	Topic
1:30pm-1:45pm	An overview of primary care development
1:45pm-2:10pm	The key attributes of good primary care
2:10pm-2:50pm	An introduction to the Primary Care Directory
2:50pm-3:15pm	Introduction to two reference frameworks: <ul style="list-style-type: none"> ● Hong Kong Reference Framework for Diabetes Care for Adults in Primary Care Settings ● Hong Kong Reference Framework for Hypertension Care for Adults in Primary Care Settings
3:15pm-3:30pm	Question and answer sessions

Name in Block Letter : _____

Contact Telephone No. : _____

Fax No. /Email : _____

Date : _____

Please visit http://www.dh.gov.hk/english/main/main_pco/main_pco.html for updated information about CME/CPD points.